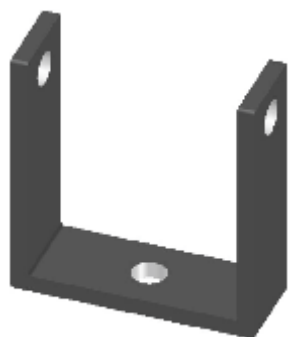
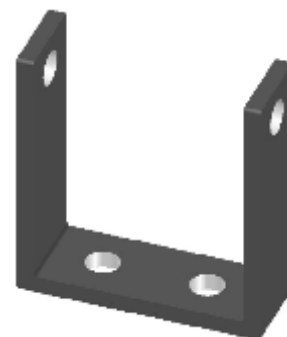


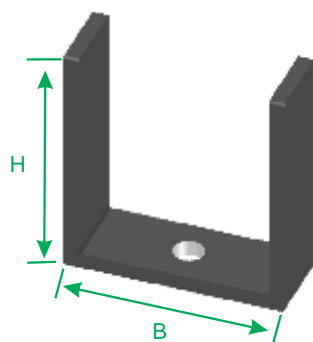
ABRAÇADEIRAS - MODELOS



C/ TRÊS FUROS
1 - P/ REBITE
2 - P/ PARAFUSO



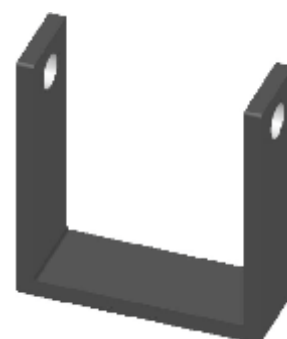
C/ QUATRO FUROS
2 - P/ REBITE
2 - P/ PARAFUSO



C/ UM FURO VIRADA
1 - P/ REBITE



C/ DOIS FUROS VIRADA
2 - P/ REBITE



SEM FURO NA BASE
COM FURO LATERAL
2 - P/ PARAFUSO

AS ABRAÇADEIRAS SÃO PRODUZIDAS EM BARRA CHATA ASTM A-36. SERVINDO DE SUSTENTAÇÃO NAS MOLAS DO FEIXE, EVITANDO ASSIM O EFEITO EMBARALHAMENTO DAS LÂMINAS DO FEIXE.

OBS.: O COMPRIMENTO ESTÁ EM CENTIMETROS E É MEDIDO 1º PELA BASE (B), DEPOIS PELA ALTURA (H).

CAIXA COM 15 UNIDADES

ABRAÇADEIRA PARA FEIXES

ABRAÇADEIRA COM 3 FUROS

AGRALE

CÓDIGO	PREÇO	MEDIDA	BITOLA	APLICAÇÃO	CX
11400	4,68	6,0 X 6,0	3/16 X 1"	AG-10-5 - 1.600-D E TX-1.600 - DT - 7 LAM	15
11401	5,56	6,0 X 7,0	3/16 X 1"	AG-10-5 - 1.600-D E TX-1.600 - DT - 8 LAM	15
11402	5,56	6,0 X 7,0	3/16 X 1"	AG-20-4 - 1.600-D E TX-1.600 - TR - 9 LAM	15
11403	7,31	6,0 X 11,0	3/16 X 1"	AG-20-8 - 1.600-D E TX-1.600 - TR - 10LAM	15
11404	4,10	6,0 X 5,5	3/16 X 1"	AG-40-4 - TX-1.800-D E 5010 - DT - 9 LAM	15
11405	4,97	6,0 X 6,5	3/16 X 1"	AG-40-4 - TX-1.800-D E 5010 - DT - 10 LAM	15
11406	5,56	6,0 X 7,0	3/16 X 1"	AG-50-5 - 1.800-D - TR - 10 LAM	15
11407	6,14	6,0 X 8,0	3/16 X 1"	AG-50-5 - 1.800-D - TR - 11 LAM	15
11408	9,07	8,0 X 6,5	1/4 X 1.1/4	AG-60-4 - 5.000, 7.000-D E 7.500-TD - TR - 8L	15
11409	9,65	8,0 X 7,5	1/4 X 1.1/4	AG-60-4 - 5.000 À 7.500-TD - TR - 9 LAM	15

CARRETA

CÓDIGO	PREÇO	MEDIDA	BITOLA	APLICAÇÃO	CX
11414	14,04	9,0 X 12,0	1/4 X 1.1/4	CRN-10-10 - RANDON 1º E 3º EIXO - 13 LAM	15
11415	16,67	9,0 X 15,0	1/4 X 1.1/4	CRN-20-10 - RANDON 2º EIXO - 13 LAM	15
11416	12,29	9,0 X 10,0	1/4 X 1.1/4	CRN-30-7 - RANDON 1º E 3º EIXO - 11 LAM	15
11417	12,29	9,0 X 10,0	1/4 X 1.1/4	CRN-40-7 - RANDON 2º EIXO - 11 LAM	15
11418	11,12	9,0 X 8,0	1/4 X 1.1/4	CRN-50-5 - RANDON 1º E 3º EIXO - 10 LAM	15
11419	11,70	9,0 X 9,0	1/4 X 1.1/4	CRN-50-5 - RANDON 1º E 3º EIXO - 11L	15
11420	14,04	9,0 X 12,0	1/4 X 1.1/4	CRN-70-8 - RANDON 2º EIXO - 14 LAM	15
11421	18,72	9,0 X 17,5	1/4 X 1.1/4	CRN-70-12 - RANDON 2º EIXO - 14 LAM	15
11422	12,29	9,0 X 10,0	1/4 X 1.1/4	CRN-60-7 - RANDON 1º E 3º EIXO - 11 LAM	15
11423	11,41	9,0 X 8,5	1/4 X 1.1/4	CRN-80-5 - RANDON 1º E 3º EIXO - 9 LAM	15
11424	11,41	9,0 X 8,5	1/4 X 1.1/4	CRN-90-6 - RANDON TRI TREM - 11 LAM	15
11425	14,63	9,0 X 12,5	1/4 X 1.1/4	CRN-90-10 - RANDON TRI TREM - 11 LAM	15
11426	13,46	9,0 X 11,0	1/4 X 1.1/4	CRN-110-8 - RANDON 1º E 3º EIXO - 11 LAM	15
11427	11,41	9,0 X 8,5	1/4 X 1.1/4	CRN-120-6 - 2º EIXO TREMINHÃO - 11 LAM	15
11428	14,63	9,0 X 12,5	1/4 X 1.1/4	CRN-120-10 - 2º EIXO TREMINHÃO - 11 LAM	15
11429	12,29	9,0 X 10,0	1/4 X 1.1/4	CGR-10-7 - GUERRA 1º E 3º EIXO - 11 LAM	15
11430	13,46	9,0 X 11,0	1/4 X 1.1/4	CGR-10-7 - GUERRA 1º E 3º EIXO - 12L	15
11431	9,95	9,0 X 7,0	1/4 X 1.1/4	CGR-20-4 - GUERRA 1º E 3º EIXO - 9 LAM	15
11432	11,41	9,0 X 8,5	1/4 X 1.1/4	CGR-30-5 - GUERRA 1º E 3º EIXO - 9 LAM	15
11433	15,50	9,0 X 13,5	1/4 X 1.1/4	CKR-10-10 - KRONE 1º E 3º EIXO - 12 LAM	15
11434	16,38	9,0 X 14,5	1/4 X 1.1/4	CNM-10-11 - NOMA 1º E 3º EIXO - 13 LAM	15
11435	16,08	9,0 X 14,0	1/4 X 1.1/4	CNM-20-11 - NOME 2º EIXO - 13 LAM	15
11436	12,29	9,0 X 10,0	1/4 X 1.1/4	CFR-10-7 - FNV TECTRAN 3 EIXOS - 11L	15
11437	11,12	9,0 X 8,0	1/4 X 1.1/4	CCE-10-6 - CERAMA 1º E 3º EIXO - 9 LAM	15
11438	11,12	9,0 X 8,0	1/4 X 1.1/4	CCE-20-6 - CERAMA 2º EIXO - 8 LAM	15
11439	11,41	9,0 X 8,5	1/4 X 1.1/4	CCL-10-6 - COLON 2º EIXO - 8 LAM	15
11440	10,53	9,0 X 7,5	1/4 X 1.1/4	CCL-20-5 - COLON 1º E 3º EIXO - 9 LAM	15

ABRAÇADEIRA PARA FEIXES

ABRAÇADEIRA COM 3 FUROS

CARRETA

CÓDIGO	PREÇO	MEDIDA	BITOLA	APLICAÇÃO	CX
11441	12,29	9,0 X 10,0	1/4 X 1.1/4	CCL-30-7 - COLON 1º E 3º EIXO - 12 LAM	15
11442	16,67	9,0 X 15,0	1/4 X 1.1/4	CSC-10-5 - S. R. FLORESTAL - DT/TR - 9L	15
11443	13,75	9,0 X 11,5	1/4 X 1.1/4	CSC-20-10 - SCHIFFER 1º E 3º - 13 LAM	15
11444	14,04	9,0 X 12,0	1/4 X 1.1/4	CIMP-10-9 - IMPERIAL - 12 LAM	15
11445	13,75	9,0 X 11,5	1/4 X 1.1/4	CAN-20-6 - CANAVIEIRA ORIGINAL - 8 LAM	15
11446	14,63	9,0 X 12,5	1/4 X 1.1/4	CAN-20-6 - CANAVIEIRA ORIGINAL - 9L	15
11447	13,46	9,0 X 11,0	1/4 X 1.1/4	CAN-10-6 - CANAVIEIRA SUBST - 9 LAM	15
11448	13,46	9,0 X 11,0	1/4 X 1.1/4	CAN-30-8 - CANAVIEIRA SUB RANDON - 14L	15
11449	16,38	9,0 X 14,5	1/4 X 1.1/4	CAN-30-11 - CANAVIEIRA SUB RANDON - 14L	15
11450	19,89	9,0 X 18,5	1/4 X 1.1/4	CLI-10-13 - LIBRELATO MAD. BOOGIE - 20L	15

CHEVROLET

CÓDIGO	PREÇO	MEDIDA	BITOLA	APLICAÇÃO	CX
11466	4,97	6,5 X 6,5	3/16 X 1"	CHE-40-6 - D-20 - 93 - TR - 9 LAM	15
11467	6,14	6,5 X 8,5	3/16 X 1"	CHE-40-8 - D-20 - 93 - TR - 9 LAM	15
11468	5,56	6,5 X 7,5	3/16 X 1"	CHE-40-6 - D-20 - 93 - TR - 10 LAM	15
11469	6,44	6,5 X 9,0	3/16 X 1"	CHE-40-8 - D-20 - 93 - TR - 10 LAM	15
11470	4,97	6,5 X 6,5	3/16 X 1"	CHE-50-6 - SILVERADO - TR - 9 LAM	15
11471	6,14	6,5 X 8,5	3/16 X 1"	CHE-50-8 - SILVERADO - TR - 9 LAM	15
11472	5,56	6,5 X 7,5	3/16 X 1"	CHE-50-6 - SILVERADO - TR - 10 LAM	15
11473	6,44	6,5 X 9,0	3/16 X 1"	CHE-50-8 - SILVERADO - TR - 10 LAM	15
11474	4,89	6,5 X 6,0	3/16 X 1"	CHE-60-4 - D-40 - TR - 12 LAM	15
11475	7,02	6,5 X 10,0	3/16 X 1"	CHE-60-9 - D-40 - TR - 12 LAM	15
11476	5,27	6,5 X 7,0	3/16 X 1"	CHE-60-4 - D-40 - TR - 13 LAM	15
11477	7,61	6,5 X 11,0	3/16 X 1"	CHE-60-9 - D-40 - TR - 13 LAM	15
11478	4,97	6,5 X 6,5	3/16 X 1"	CHE-90-4 - C-60, D-60 - 75 CURTO - DT - 9L	15
11479	5,27	6,5 X 7,0	3/16 X 1"	CHE-90-5 - C-60, D-60 - 75 CURTO - DT - 10L	15
11480	7,90	7,7 X 6,5	1/4 X 1.1/4	CHE-100-4 - C-60, D-60 - 75 CURTO - TR - 12L	15
11481	11,99	7,7 X 10,0	1/4 X 1.1/4	CHE-100-7 - C-60, D-60 - 75 CURTO - TR - 12L	15
11482	9,07	7,7 X 7,5	1/4 X 1.1/4	CHE-100-4 - C-60, D-60 - 75 CURTO - TR - 13L	15
11483	12,29	7,7 X 11,0	1/4 X 1.1/4	CHE-100-7 - C-60, D-60 - 75 CURTO - TR - 13L	15
11484	4,97	6,5 X 6,5	3/16 X 1"	CHE-110-4 - D-70 DETROIT - DT - 9 LAM	15
11485	5,85	6,5 X 8,0	3/16 X 1"	CHE-110-6 - D-70 DETROIT - DT - 9 LAM	15
11486	5,27	6,5 X 7,0	3/16 X 1"	CHE-110-4 - D-70 DETROIT - DT - 10 LAM	15
11487	6,44	6,5 X 9,0	3/16 X 1"	CHE-110-6 - D-70 DETROIT - DT - 10 LAM	15
11488	9,07	7,7 X 7,5	1/4 X 1.1/4	CHE-120-5 - D-70 DETROIT - TR - 15 LAM	15
11489	9,07	7,7 X 7,5	1/4 X 1.1/4	CHE-120-5 - D-70 DETROIT - TR - 16 LAM	15
11490	7,31	7,7 X 6,0	1/4 X 1.1/4	CHE-130-4 - D-11.000 À D-22.000 - DT - 9 LAM	15
11491	13,75	7,7 X 13,0	1/4 X 1.1/4	CHE-130-9 - D-11.000 À D-22.000 - DT - 9 LAM	15
11492	7,31	7,7 X 6,0	1/4 X 1.1/4	CHE-140-7 - D-11.000 À D-14.000 - TR - 14 LAM	15
11493	6,14	7,7 X 5,0	1/4 X 1.1/4	CHE-180-5 - D-11.000 - AUX - 9 LAM	15

ABRAÇADEIRA PARA FEIXES

ABRAÇADEIRA COM 3 FUROS

FIAT

CÓDIGO	PREÇO	MEDIDA	BITOLA	APLICAÇÃO	CX
11498	4,97	6,0 X 7,5	3/16 X 1"	FT-30-4 - IVECO T. DAILY 35-10 - TR - 7 LAM	15
11499	5,85	7,0 X 7,5	3/16 X 1"	FT-60-3 - AD-7 / 70CI - TRATOR EST. - 7 LAM	15
11500	8,78	7,0 X 11,0	1/4 X 1.1/4	FT-60-5 - AD-7 / 70CI - TRATOR EST. - 7 LAM	15
11501	5,85	7,0 X 7,5	3/16 X 1"	FT-70-3 - AD-7 B - TRATOR ESTEIRA - 7 LAM	15
11502	8,78	7,0 X 11,0	1/4 X 1.1/4	FT-70-5 - AD-7 B - TRATOR ESTEIRA - 7 LAM	15
11503	10,53	8,0 X 8,5	1/4 X 1.1/4	FT-80-4 - AD-9 - TRATOR ESTEIRA - 8 LAM	15
11504	12,58	8,0 X 11,5	1/4 X 1.1/4	FT-80-6 - AD-9 - TRATOR ESTEIRA - 8 LAM	15

FORD

CÓDIGO	PREÇO	MEDIDA	BITOLA	APLICAÇÃO	CX
11509	7,31	5,8 X 10,0	3/16 X 1"	FO-20-4 - F-1.000 - TR - 9 LAM	15
11510	7,90	5,8 X 11,0	3/16 X 1"	FO-20-8 - F-1.000 - TR - 10 LAM	15
11511	2,93	5,8 X 5,5	3/16 X 1"	FO-300-4 - F-2.000 - TR - 9 LAM	15
11512	8,48	5,8 X 12,0	3/16 X 1"	FO-300-8 - F-2.000 - TR - 9 LAM	15
11513	4,68	5,8 X 6,5	3/16 X 1"	FO-300-4 - F-2.000 - TR - 10 LAM	15
11514	9,36	5,8 X 13,0	3/16 X 1"	FO-300-8 - F-2.000 - TR - 10 LAM	15
11515	15,80	7,7 X 13,0	1/4 X 1.1/4	FO-200-5 - F-250 - TR - 5 LAM	15
11516	16,97	7,7 X 14,0	1/4 X 1.1/4	FO-200-5 - F-250 - TR - 6 LAM	15
11517	4,97	5,1 X 7,5	3/16 X 1"	FO-240-8 - F-350 - DT - 9 LAM	15
11518	3,80	5,8 X 5,5	3/16 X 1"	FO-310-4 - F-350 ANTIGO - TR - 9 LAM	15
11519	7,31	5,8 X 10,0	3/16 X 1"	FO-310-8 - F-350 ANTIGO - TR - 9 LAM	15
11520	4,68	5,8 X 6,5	3/16 X 1"	FO-310-4 - F-350 ANTIGO - TR - 10 LAM	15
11521	7,90	5,8 X 11,0	3/16 X 1"	FO-310-8 - F-350 ANTIGO - TR - 10 LAM	15
11522	5,56	7,7 X 4,5	1/4 X 1.1/4	FO-260-2 - F-350 - TR - 10 LAM	15
11523	9,07	7,7 X 7,5	1/4 X 1.1/4	FO-260-5 - F-350 - TR - 10 LAM	15
11524	4,39	6,5 X 6,0	3/16 X 1"	FO-50-4 - F-4.000 ANTIGO - TR - 13 LAM	15
11525	7,61	6,5 X 11,0	3/16 X 1"	FO-50-9 - F-4.000 ANTIGO - TR - 13 LAM	15
11526	5,27	6,5 X 7,0	3/16 X 1"	FO-50-4 - F-4.000 ANTIGO - TR - 14 LAM	15
11527	7,61	6,5 X 12,0	3/16 X 1"	FO-50-9 - F-4.000 ANTIGO - TR - 14 LAM	15
11528	4,39	6,5 X 6,0	3/16 X 1"	FO-70-4 - F-4.000 - TR - 10 LAM	15
11529	7,61	6,5 X 11,0	3/16 X 1"	FO-70-9 - F-4.000 - TR - 10 LAM	15
11530	5,27	6,5 X 7,0	3/16 X 1"	FO-70-4 - F-4.000 - TR - 11 LAM	15
11531	7,31	6,5 X 12,0	3/16 X 1"	FO-70-9 - F-4.000 - TR - 11 LAM	15
11533	9,07	7,7 X 7,5	1/4 X 1.1/4	FO-170-5 - F-4.000 - TR - 10 LAM	15
11534	3,22	6,5 X 4,0	3/16 X 1"	FO-80-3 - F-600 À F-21.000 - DT - 11 LAM	15
11535	3,80	6,5 X 5,0	3/16 X 1"	FO-80-3 - F-600 À F-21.000 - DT - 12 LAM	15
11536	6,44	6,5 X 9,0	3/16 X 1"	FO-80-8 - F-600 À F-21.000 - DT - 12 LAM	15
11537	7,90	7,7 X 6,5	1/4 X 1.1/4	FO-270-5 - F-600 À F-15.000 - TR - 15 LAM	15
11538	8,48	7,7 X 7,0	1/4 X 1.1/4	FO-270-5 - F-600 À F-15.000 - TR - 16 LAM	15
11539	7,90	7,7 X 6,5	1/4 X 1.1/4	FO-90-5 - F-11.000 À 15.000 - TR - 12 LAM	15
11540	9,07	7,7 X 7,5	1/4 X 1.1/4	FO-90-5 - F-11.000 À 15.000 - TR - 12 LAM	15
11541	5,56	7,7 X 7,0	1/4 X 1.1/4	FO-120-4 - F-14.00 SAPÃO - TR - 12 LAM	15
11542	7,90	7,7 X 6,5	1/4 X 1.1/4	FO-280-4 - F-12.000, F-14.000 - DT - 10 LAM	15
11543	9,07	7,7 X 7,5	1/4 X 1.1/4	FO-280-4 - F-12.000, F-14.000 - DT - 11 LAM	15

ABRAÇADEIRA PARA FEIXES

ABRAÇADEIRA COM 3 FUROS

FORD

CÓDIGO	PREÇO	MEDIDA	BITOLA	APLICAÇÃO	CX
11544	10,24	10,0 X 7,5	1/4 X 1.1/4	FO-340-5 - F-16.000 - DT - 9 LAM	15
11545	9,07	7,7 X 7,5	1/4 X 1.1/4	FO-250-4 - F-14.000 E F-16.000 - TR - 9 LAM	15
11546	9,07	7,7 X 7,5	1/4 X 1.1/4	FO-350-4 - F-12.000 - TR - 9 LAM	15
11547	8,48	10,0 X 6,5	1/4 X 1.1/4	FO-130-4 - CARGO 1317 À 1617 - DT - 7 LAM	15
11548	10,24	10,0 X 7,5	1/4 X 1.1/4	FO-130-5 - CARGO 1317 À 1617 - DT - 7 LAM	15
11549	10,24	10,0 X 7,5	1/4 X 1.1/4	FO-130-4 - CARGO 1317 À 1617 - DT - 8 LAM	15
11550	11,12	10,0 X 8,5	1/4 X 1.1/4	FO-130-5 - CARGO 1317 À 1617 - DT - 8 LAM	15
11551	10,24	7,7 X 8,5	1/4 X 1.1/4	FO-140-5 - CARGO 1514 À 1617 - TR - 12 LAM	15
11552	10,82	7,7 X 9,5	1/4 X 1.1/4	FO-140-5 - CARGO 1514 À 1617 - TR - 13 LAM	15
11553	8,78	10,0 X 6,5	1/4 X 1.1/4	FO-360-4 - CARGO 13 À 16T E 3224 - DT - 7L	15
11554	10,82	10,0 X 8,0	1/4 X 1.1/4	FO-360-5 - CARGO 13 À 16T E 3224 - DT - 7L	15
11555	10,24	10,0 X 7,5	1/4 X 1.1/4	FO-360-4 - CARGO 13 À 16T E 3224 - DT - 8L	15
11556	11,70	10,0 X 9,0	1/4 X 1.1/4	FO-360-5 - CARGO 13 À 16T E 3224 - DT - 8L	15
11557	11,12	10,0 X 8,5	1/4 X 1.1/4	FO-360-4 - CARGO 13 À 16T E 3224 - DT - 9L	15
11558	13,46	10,0 X 10,0	1/4 X 1.1/4	FO-360-5 - CARGO 13 À 16T E 3224 - DT - 9L	15
11559	13,46	7,7 X 12,5	1/4 X 1.1/4	FO-370-5 - CARGO 1313 À 1419 - TR - 8 LAM	15
11560	17,26	9,0 X 15,5	1/4 X 1.1/4	FO-390-8 - CARGO 2222 À 2631 - TR - 13 LAM	15

DODGE

CÓDIGO	PREÇO	MEDIDA	BITOLA	APLICAÇÃO	CX
11569	7,31	7,7 X 6,0	1/4 X 1.1/4	DOD-20-4 - D/P-900 E D/P-950 - DT - 10 LAM	15
11570	10,24	7,7 X 8,5	1/4 X 1.1/4	DOD-20-7 - D/P-900 E D/P-950 - DT - 10 LAM	15
11571	9,07	7,7 X 7,5	1/4 X 1.1/4	DOD-30-5 - D/P-900 E D/P-950 - TR - 15 LAM	15

GMC

CÓDIGO	PREÇO	MEDIDA	BITOLA	APLICAÇÃO	CX
11576	7,90	7,0 X 6,0	3/16 X 1"	GMC-30-3 - 7.110 - TR - 6 LAM	15
11577	10,24	10,0 X 7,5	1/4 X 1.1/4	GMC-20-4 - 14.170 E 14.190 - DT - 6 LAM	15
11578	10,24	7,7 X 8,5	1/4 X 1.1/4	GMC-40-6 - 12.170, 14.190 E 16.220 - TR - 12L	15
11579	15,50	7,7 X 15,0	1/4 X 1.1/4	GMC-40-10 - 12.170, 14.190 E 16.220 - TR - 12L	15

ABRAÇADEIRA PARA FEIXES

ABRAÇADEIRA COM 3 FUROS

IMPORTADOS

CÓDIGO	PREÇO	MEDIDA	BITOLA	APLICAÇÃO	CX
11584	6,14	7,0 X 8,5	3/16 X 1"	AGI-30-5 - VOLARE - SUBST. - DT - 6 LAM	15
11585	9,07	8,0 X 6,5	1/4 X 1.1/4	AGI-10-5 - VOLARE A6 - TR - 5 LAM	15
11586	12,29	8,0 X 11,0	1/4 X 1.1/4	AGI-10-6 - VOLARE A6 - TR - 5 LAM	15
11587	9,65	8,0 X 7,5	1/4 X 1.1/4	AGI-10-5 - VOLARE A6 - TR - 7 LAM	15
11588	13,75	8,0 X 12,0	1/4 X 1.1/4	AGI-10-6 - VOLARE A6 - TR - 7 LAM	15
11589	12,29	8,0 X 11,0	1/4 X 1.1/4	AGI-20-5 - VOLARE A8 - TR - 5 LAM	15
11590	13,75	8,0 X 12,0	1/4 X 1.1/4	AGI-20-5 - VOLARE A8 - TR - 6 LAM	15
11591	14,63	8,0 X 13,0	1/4 X 1.1/4	AGI-50-7 - VOLARE W-8 - TR - 9 LAM	15
11592	15,50	8,0 X 14,0	1/4 X 1.1/4	AGI-50-8 - VOLARE W-8 - TR - 10 LAM	15
11593	3,80	7,0 X 5,0	3/16 X 1"	AM-10-4 - TOPIC 2.2 - TR - 6 LAM	15
11594	4,97	7,0 X 6,5	3/16 X 1"	AM-10-5 - TOPIC 2.2 - TR - 6 LAM	15
11595	4,68	7,0 X 6,0	3/16 X 1"	AM-10-4 - TOPIC 2.2 - TR - 7 LAM	15
11596	5,85	7,0 X 7,5	3/16 X 1"	AM-10-5 - TOPIC 2.2 - TR - 7 LAM	15
11597	3,80	7,0 X 5,0	3/16 X 1"	AM-20-4 - TOPIC 2.7 - TR - 6 LAM	15
11598	4,97	7,0 X 6,5	3/16 X 1"	AM-20-5 - TOPIC 2.7 - TR - 6 LAM	15
11599	4,68	7,0 X 6,0	3/16 X 1"	AM-20-4 - TOPIC 2.7 - TR - 7 LAM	15
11600	5,85	7,0 X 7,5	3/16 X 1"	AM-20-5 - TOPIC 2.7 - TR - 7 LAM	15
11601	4,68	7,0 X 6,0	3/16 X 1"	HY-10-4 - H-100, GS-100 E LX-100 - TR - 5 LAM	15
11602	3,51	7,0 X 4,5	3/16 X 1"	MTS-10-3 - L-200 4 X 4 - TR - 5 LAM	15
11603	8,78	7,0 X 11,0	3/16 X 1"	MTS-10-5 - L-200 4 X 4 - TR - 5 LAM	15
11604	7,90	7,0 X 10,0	3/16 X 1"	MTS-20-5 - L-200 4 X 2 - TR - 5 LAM	15
11605	3,51	6,0 X 5,5	3/16 X 1"	TOI-30-3 - HILUX 4 X 4 - DT - 5 LAM	15
11606	4,10	6,0 X 6,0	3/16 X 1"	TOI-30-5 - HILUX 4 X 4 - DT - 5 LAM	15
11607	8,48	6,0 X 13,0	3/16 X 1"	TOI-40-5 - HILUX 4 X 4 - TR - 5 LAM	15
11608	7,31	6,0 X 11,0	3/16 X 1"	TOI-70-4 - HILUX 4 X 4 - TR - 4 LAM	15
11609	7,31	6,0 X 11,0	3/16 X 1"	TOI-120-3 - HILUX 2.8 4 X 2 - TR - 5 LAM	15

INTERNACIONAL

CÓDIGO	PREÇO	MEDIDA	BITOLA	APLICAÇÃO	CX
11619	7,31	10,0 X 5,5	1/4 X 1.1/4	INT-10-3 - 4.700 E 4.900 - DT - 9 LAM	15
11620	11,12	10,0 X 8,6	1/4 X 1.1/4	INT-10-6 - 4.700 E 4.900 - DT - 9 LAM	15
11621	11,12	10,0 X 8,6	1/4 X 1.1/4	INT-20-6 - 9.800 - DT - 8 LAM	15

ABRAÇADEIRA PARA FEIXES

ABRAÇADEIRA COM 3 FUROS

MERCEDES BENZ

CÓDIGO	PREÇO	MEDIDA	BITOLA	APLICAÇÃO	CX
11626	4,10	7,0 X 5,5	3/16 X 1"	MB-350-3 - L-709À L-914 - AUX - 5 LAM	15
11627	5,85	7,0 X 5,5	3/16 X 1"	MB-630-3 - L-710 - DIANTEIRO - 6 LAM	15
11628	5,85	7,0 X 7,5	3/16 X 1"	MB-630-5 - L-710 - DIANTEIRO - 6 LAM	15
11629	4,68	7,0 X 6,5	3/16 X 1"	MB-630-3 - L-710 - DIANTEIRO - 7 LAM	15
11630	6,14	7,0 X 8,5	3/16 X 1"	MB-630-5 - L-710 - DIANTEIRO - 7 LAM	15
11631	6,44	7,0 X 9,0	3/16 X 1"	MB-480-6 - 710 À 914 - TRASEIRO - 10 LAM	15
11632	11,99	7,0 X 11,0	1/4 X 1.1/4	MB-480-8 - 710 À 914 - TRASEIRO - 10 LAM	15
11633	11,12	7,0 X 10,0	1/4 X 1.1/4	MB-480-6 - 710 À 914 - TRAS - 11 LAM	15
11634	13,16	7,0 X 12,0	1/4 X 1.1/4	MB-480-8 - 710 À 914 - TRAS - 11 LAM	15
11635	4,39	6,0 X 6,5	3/16 X 1"	MB-470-4 - 321/1111 - DIANTEIRO - 10 LAM	15
11636	7,31	6,0 X 11,0	3/16 X 1"	MB-470-8 - 321/1111 - DIANTEIRO - 10 LAM	15
11637	4,97	6,0 X 7,5	3/16 X 1"	MB-470-4 - 321/1111 - DIANT - 11 LAM	15
11638	7,90	6,0 X 12,0	3/16 X 1"	MB-470-8 - 321/1111 - DIANT - 11 LAM	15
11639	4,39	6,0 X 6,5	3/16 X 1"	MB-510-4 - LA-1113 - DIANTEIRO - 10 LAM	15
11640	7,31	6,0 X 11,0	3/16 X 1"	MB-510-8 - LA-1113 - DIANTEIRO - 10 LAM	15
11641	4,97	6,0 X 7,5	3/16 X 1"	MB-510-4 - LA-1113 - DIANT - 11 LAM	15
11642	7,90	6,0 X 12,0	3/16 X 1"	MB-510-8 - LA-1113 - DIANT - 11 LAM	15
11643	7,02	7,0 X 6,5	1/4 X 1.1/4	MB-700-3 - 1313 À 1318 - DIANT - 8 LAM	15
11644	11,12	7,0 X 10,0	1/4 X 1.1/4	MB-700-6 - 1313 À 1318 - DIANT - 8 LAM	15
11645	8,19	7,0 X 7,5	1/4 X 1.1/4	MB-700-3 - 1313 À 1318 - DIANT - 9 LAM	15
11646	11,99	7,0 X 11,0	1/4 X 1.1/4	MB-700-6 - 1313 À 1318 - DIANT - 9 LAM	15
11647	8,19	7,0 X 7,5	1/4 X 1.1/4	MB-120-3 - L-LK-1214 À 1621 - DT - 5 LAM	15
11648	9,95	7,0 X 9,0	1/4 X 1.1/4	MB-120-4 - L-LK-1214 À 1621 - DT - 5 LAM	15
11649	6,14	7,0 X 8,5	1/4 X 1.1/4	MB-120-3 - L-LK-1214 À 1621 - DT - 6 LAM	15
11650	11,12	7,0 X 10,0	1/4 X 1.1/4	MB-120-4 - L-LK-1214 À 1621 - DT - 6 LAM	15
11651	7,02	7,0 X 6,5	1/4 X 1.1/4	MB-640-3 - 1215-C À 1632 - DIANT - 10 LAM	15
11652	11,99	7,0 X 11,0	1/4 X 1.1/4	MB-640-6 - 1215-C À 1632 - DIANT - 10 LAM	15
11653	8,19	7,0 X 7,5	1/4 X 1.1/4	MB-640-3 - 1215-C À 1632 - DT - 11 LAM	15
11654	13,16	7,0 X 12,0	1/4 X 1.1/4	MB-640-6 - 1215-C À 1632 - DT - 11 LAM	15
11655	10,53	8,0 X 8,5	1/4 X 1.1/4	MB-130-5 - 1618, 1620 E 1215-C - TR - 7 LAM	15
11656	11,70	8,0 X 10,0	1/4 X 1.1/4	MB-130-5 - 1618, 1620 E 1215-C - TR - 8 LAM	15
11657	9,65	8,0 X 7,5	1/4 X 1.1/4	MB-270-3 - 1714 À 1721 - DIANTEIRO - 9 LAM	15
11658	13,75	8,0 X 12,0	1/4 X 1.1/4	MB-270-6 - 1714 À 1721 - DIANT - 10 LAM	15
11659	9,65	8,0 X 7,5	1/4 X 1.1/4	MB-760-3 - 1718-M - DIANTEIRO - 6 LAM	15
11660	10,53	8,0 X 8,5	1/4 X 1.1/4	MB-760-3 - 1718-M - DIANTEIRO - 7 LAM	15
11661	10,24	8,0 X 8,0	1/4 X 1.1/4	MB-750-5 - 1718-M - TRASEIRO - 19 LAM	15
11662	19,89	8,0 X 18,0	1/4 X 1.1/4	MB-750-13 - 1718-M - TRASEIRO - 19 LAM	15
11664	11,41	9,0 X 8,5	1/4 X 1.1/4	MB-530-8 - 1924 E 1929 - DIANT - 8 LAM	15
11668	11,41	9,0 X 8,5	1/4 X 1.1/4	MB-160-10 - 1932 À 2635 - DIANT - 10 LAM	15
11671	9,36	8,0 X 7,0	1/4 X 1.1/4	MB-600-3 - LK-2423, 2428 E 2480 - DT - 6 LAM	15
11672	10,53	8,0 X 8,5	1/4 X 1.1/4	MB-600-4 - LK-2423, 2428 E 2480 - DT - 6 LAM	15
11673	10,53	8,0 X 8,5	1/4 X 1.1/4	MB-600-3 - LK-2423, 2428 E 2480 - DT - 7 LAM	15
11674	11,70	8,0 X 10,0	1/4 X 1.1/4	MB-600-4 - LK-2423, 2428 E 2480 - DT - 7 LAM	15

ABRAÇADEIRA PARA FEIXES

ABRAÇADEIRA COM 3 FUROS

ÔNIBUS - MERCEDES BENZ

CÓDIGO	PREÇO	MEDIDA	BITOLA	APLICAÇÃO	CX
12300	6,43	7,0 X 8,0	3/16 X 1"	MB-590-4 - OF-1417 ELETRONIC - DIANT - 8L	15
12301	9,06	7,0 X 11,0	3/16 X 1"	MB-590-6 - OF-1417 ELETRONIC - DIANT - 8L	15
12302	10,23	7,0 X 12,5	3/16 X 1"	MB-590-7 - OF-1417 ELETRONIC - DIANT - 8L	15
12303	11,40	7,0 X 14,0	3/16 X 1"	MB-590-8 - OF-1417 ELETRONIC - DIANT - 8L	15
12304	7,60	7,0 X 9,5	3/16 X 1"	MB-590-4 - OF-1417 ELETRONIC - DIANT - 9L	15
12305	10,23	7,0 X 12,5	3/16 X 1"	MB-590-6 - OF-1417 ELETRONIC - DIANT - 9L	15
12306	11,40	7,0 X 14,0	3/16 X 1"	MB-590-7 - OF-1417 ELETRONIC - DIANT - 9L	15
12307	12,57	7,0 X 15,5	3/16 X 1"	MB-590-8 - OF-1417 ELETRONIC - DIANT - 9L	15
12308	6,43	7,0 X 8,0	3/16 X 1"	MB-680-4 - OF-1417 ELETRONIC-99 - DT - 9L	15
12309	10,23	7,0 X 12,5	3/16 X 1"	MB-680-7 - OF-1417 ELETRONIC-99 - DT - 9L	15
12310	7,60	7,0 X 9,5	3/16 X 1"	MB-680-4 - OF-1417 ELETRONIC-99 - DT - 10L	15
12311	11,40	7,0 X 14,0	3/16 X 1"	MB-680-7 - OF-1417 ELETRONIC-99 - DT - 10L	15

ÔNIBUS - VOLVO

CÓDIGO	PREÇO	MEDIDA	BITOLA	APLICAÇÃO	CX
12316	8,77	10,0 X 6,5	1/4 X 1.1/4	VL-120-3 - B-58 - DIANTEIRO - 5 LAM	15
12317	9,65	10,0 X 7,5	1/4 X 1.1/4	VL-120-4 - B-58 - DIANTEIRO - 5 LAM	15
12318	9,65	10,0 X 7,5	1/4 X 1.1/4	VL-130-5 - B-58 - TRASEIRO - 6 LAM	15

SCÂNIA

CÓDIGO	PREÇO	MEDIDA	BITOLA	APLICAÇÃO	CX
11684	23,40	10,0 X 18,0	1/4 X 1.1/4	SC-140-8 - 112-E À 143-E - TRAS - 12 LAM	15
11685	22,82	9,0 X 20,5	1/4 X 1.1/4	SC-150-7 - 124-G / 260 À 420 - TRAS - 10 LAM	15

MEIO AMBIENTE

Nossa Indústria “**Molas Tabuleiro**” nasceu com a consciência de sua responsabilidade em contribuir com a preservação do meio ambiente. Com isso, tomamos o cuidado em coletar os resíduos gerados pelo processo fabril. Atendendo assim, não só as exigências da legislação ambiental como também garantindo o bem-estar de futuras gerações.

ABRAÇADEIRA PARA FEIXES

ABRAÇADEIRA COM 3 FUROS

TOYOTA

CÓDIGO	PREÇO	MEDIDA	BITOLA	APLICAÇÃO	CX
11690	4,39	7,0 X 5,5	3/16 X 1"	TO-10-4 - JEEP E PICK-UP - DT - 4 LAM	15
11691	4,39	7,0 X 5,5	3/16 X 1"	TO-10-4 - JEEP E PICK-UP - DT - 5 LAM	15
11692	6,44	7,0 X 5,5	3/16 X 1"	TO-10-4 - JEEP E PICK-UP - DT - 6 LAM	15
11693	5,56	7,0 X 7,0	3/16 X 1"	TO-10-6 - JEEP E PICK-UP - DT - 6 LAM	15
11694	4,39	7,0 X 5,5	3/16 X 1"	TO-10-4 - JEEP E PICK-UP - DT - 7 LAM	15
11695	5,56	7,0 X 7,0	3/16 X 1"	TO-10-6 - JEEP E PICK-UP - DT - 7 LAM	15
11696	4,68	7,0 X 6,0	3/16 X 1"	TO-10-4 - JEEP E PICK-UP - DT - 8 LAM	15
11697	5,85	7,0 X 7,5	3/16 X 1"	TO-10-6 - JEEP E PICK-UP - DT - 8 LAM	15
11698	4,39	7,0 X 5,5	3/16 X 1"	TO-20-4 - PICK-UP - TRAS - 4 LAM	15
11699	4,39	7,0 X 5,5	3/16 X 1"	TO-20-4 - PICK-UP - TRAS - 5 LAM	15
11700	4,39	7,0 X 5,5	3/16 X 1"	TO-20-4 - PICK-UP - TRAS - 6 LAM	15
11701	5,56	7,0 X 7,0	3/16 X 1"	TO-20-6 - PICK-UP - TRAS - 6 LAM	15
11702	4,39	7,0 X 5,5	3/16 X 1"	TO-20-4 - PICK-UP - TRAS - 7 LAM	15
11703	5,56	7,0 X 7,0	3/16 X 1"	TO-20-6 - PICK-UP - TRAS - 7 LAM	15
11704	4,39	7,0 X 5,5	3/16 X 1"	TO-20-4 - PICK-UP - TRAS - 8 LAM	15
11705	5,56	7,0 X 7,0	3/16 X 1"	TO-20-6 - PICK-UP - TRAS - 8 LAM	15
11706	4,68	7,0 X 6,0	3/16 X 1"	TO-20-4 - PICK-UP - TRAS - 9 LAM	15
11707	5,85	7,0 X 7,5	3/16 X 1"	TO-20-6 - PICK-UP - TRAS - 9 LAM	15
11708	4,39	7,0 X 5,5	3/16 X 1"	TO-50-4 - JEEP - TRAS - 4 LAM	15
11709	4,39	7,0 X 5,5	3/16 X 1"	TO-50-4 - JEEP - TRAS - 5 LAM	15
11710	4,39	7,0 X 5,5	3/16 X 1"	TO-50-4 - JEEP - TRAS - 6 LAM	15
11711	5,56	7,0 X 7,0	3/16 X 1"	TO-50-6 - JEEP - TRAS - 6 LAM	15
11712	4,39	7,0 X 5,5	3/16 X 1"	TO-50-4 - JEEP - TRAS - 7 LAM	15
11713	5,56	7,0 X 7,0	3/16 X 1"	TO-50-6 - JEEP - TRAS - 7 LAM	15
11714	4,39	7,0 X 5,5	3/16 X 1"	TO-50-4 - JEEP - TRAS - 8 LAM	15
11715	5,56	7,0 X 7,0	3/16 X 1"	TO-50-6 - JEEP - TRAS - 8 LAM	15
11716	4,68	7,0 X 6,0	3/16 X 1"	TO-50-4 - JEEP - TRAS - 9 LAM	15
11717	5,85	7,0 X 7,5	3/16 X 1"	TO-50-6 - JEEP - TRAS - 9 LAM	15
11718	4,39	7,0 X 5,5	3/16 X 1"	TO-100-4 - TOYOTA 94 - DT - 4 LAM	15
11719	4,39	7,0 X 5,5	3/16 X 1"	TO-100-4 - TOYOTA 94 - DT - 5 LAM	15
11720	4,39	7,0 X 5,5	3/16 X 1"	TO-100-4 - TOYOTA 94 - DT - 6 LAM	15
11721	5,56	7,0 X 7,0	3/16 X 1"	TO-100-6 - TOYOTA 94 - DT - 6 LAM	15
11722	4,39	7,0 X 5,5	3/16 X 1"	TO-100-4 - TOYOTA 94 - DT - 7 LAM	15
11723	5,56	7,0 X 7,0	3/16 X 1"	TO-100-6 - TOYOTA 94 - DT - 7 LAM	15
11724	4,68	7,0 X 6,0	3/16 X 1"	TO-100-4 - TOYOTA 94 - DT - 8 LAM	15
11725	5,85	7,0 X 7,5	3/16 X 1"	TO-100-6 - TOYOTA 94 - DT - 8 LAM	15
11726	4,39	7,0 X 5,5	3/16 X 1"	TO-110-4 - TOYOTA 94 - TR - 4 LAM	15
11727	4,39	7,0 X 5,5	3/16 X 1"	TO-110-4 - TOYOTA 94 - TR - 5 LAM	15
11728	4,39	7,0 X 5,5	3/16 X 1"	TO-110-4 - TOYOTA 94 - TR - 6 LAM	15
11729	5,56	7,0 X 7,0	3/16 X 1"	TO-110-6 - TOYOTA 94 - TR - 6 LAM	15
11730	4,39	7,0 X 5,5	3/16 X 1"	TO-110-4 - TOYOTA 94 - TR - 7 LAM	15
11731	5,56	7,0 X 7,0	3/16 X 1"	TO-110-6 - TOYOTA 94 - TR - 7 LAM	15
11732	4,39	7,0 X 5,5	3/16 X 1"	TO-110-4 - TOYOTA 94 - TR - 8 LAM	15
11733	5,56	7,0 X 7,0	3/16 X 1"	TO-110-6 - TOYOTA 94 - TR - 8 LAM	15
11734	4,68	7,0 X 6,0	3/16 X 1"	TO-110-4 - TOYOTA 94 - TR - 9 LAM	15

ABRAÇADEIRA PARA FEIXES

ABRAÇADEIRA COM 3 FUROS

TOYOTA

CÓDIGO	PREÇO	MEDIDA	BITOLA	APLICAÇÃO	CX
11735	5,85	7,0 X 7,5	3/16 X 1"	TO-110-6 - TOYOTA 94 - TR - 9 LAM	15
11736	4,39	7,0 X 5,5	3/16 X 1"	TO-80-4 - JEEP - FC - TRAS - 4 LAM	15
11737	4,39	7,0 X 5,5	3/16 X 1"	TO-80-4 - JEEP - FC - TRAS - 5 LAM	15
11738	4,39	7,0 X 5,5	3/16 X 1"	TO-80-4 - JEEP - FC - TRAS - 6 LAM	15
11739	5,56	7,0 X 7,0	3/16 X 1"	TO-80-6 - JEEP - FC - TRAS - 6 LAM	15
11740	4,39	7,0 X 5,5	3/16 X 1"	TO-80-4 - JEEP - FC - TRAS - 7 LAM	15
11741	5,56	7,0 X 7,0	3/16 X 1"	TO-80-6 - JEEP - FC - TRAS - 7 LAM	15
11742	4,39	7,0 X 5,5	3/16 X 1"	TO-80-4 - JEEP - FC - TRAS - 8 LAM	15
11743	5,56	7,0 X 7,0	3/16 X 1"	TO-80-6 - JEEP - FC - TRAS - 8 LAM	15
11744	4,68	7,0 X 6,0	3/16 X 1"	TO-80-4 - JEEP - FC - TRAS - 9 LAM	15
11745	5,85	7,0 X 7,5	3/16 X 1"	TO-80-6 - JEEP - FC - TRAS - 9 LAM	15
11746	4,39	7,0 X 5,5	3/16 X 1"	TO-90-4 - PICK-UP - FC - TRAS - 4 LAM	15
11747	4,39	7,0 X 5,5	3/16 X 1"	TO-90-4 - PICK-UP - FC - TRAS - 5 LAM	15
11748	4,39	7,0 X 5,5	3/16 X 1"	TO-90-4 - PICK-UP - FC - TRAS - 6 LAM	15
11749	5,56	7,0 X 7,0	3/16 X 1"	TO-90-6 - PICK-UP - FC - TRAS - 6 LAM	15
11750	4,39	7,0 X 5,5	3/16 X 1"	TO-90-4 - PICK-UP - FC - TRAS - 7 LAM	15
11751	5,56	7,0 X 7,0	3/16 X 1"	TO-90-6 - PICK-UP - FC - TRAS - 7 LAM	15
11752	4,39	7,0 X 5,5	3/16 X 1"	TO-90-4 - PICK-UP - FC - TRAS - 8 LAM	15
11753	5,56	7,0 X 7,0	3/16 X 1"	TO-90-6 - PICK-UP - FC - TRAS - 8 LAM	15
11754	4,68	7,0 X 6,0	3/16 X 1"	TO-90-4 - PICK-UP - FC - TRAS - 9 LAM	15
11755	5,85	7,0 X 7,5	3/16 X 1"	TO-90-6 - PICK-UP - FC - TRAS - 9 LAM	15

ABRAÇADEIRA PARA FEIXES

ABRAÇADEIRA COM 3 FUROS

TRUCK

CÓDIGO	PREÇO	MEDIDA	BITOLA	APLICAÇÃO	CX
11760	10,24	8,0 X 8,0	1/4 X 1.1/4	TRD-20-5 - RODOVIÁRIA 1111 E 1113 - 10 LAM	15
11761	11,70	8,0 X 10,0	1/4 X 1.1/4	TRD-20-7 - RODOVIÁRIA 1111 E 1113 - 10 LAM	15
11762	13,46	8,0 X 11,5	1/4 X 1.1/4	TRD-20-8 - RODOVIÁRIA 1111 E 1113 - 10 LAM	15
11763	13,75	8,0 X 12,0	1/4 X 1.1/4	TRN-10-8 - RANDON 1111 E 1113 - 9 LAM	15
11764	14,63	8,0 X 13,0	1/4 X 1.1/4	TRN-10-8 - RANDON 1111 E 1113 - 10 LAM	15
11765	14,63	8,0 X 13,0	1/4 X 1.1/4	TRN-10-8 - RANDON 1111 E 1113 - 11 LAM	15
11766	14,63	8,0 X 13,0	1/4 X 1.1/4	TRN-10-8 - RANDON 1111 E 1113 - 12 LAM	15
11767	10,24	8,0 X 8,0	1/4 X 1.1/4	TRN-20-5 - RANDON 1313 E 1513 - 11 LAM	15
11768	14,63	8,0 X 13,0	1/4 X 1.1/4	TRN-20-9 - RANDON 1313 E 1513 - 11 LAM	15
11769	11,41	8,0 X 9,5	1/4 X 1.1/4	TID-10-6 - IDEROL 1113 E 1513 - 10 LAM	15
11770	13,46	8,0 X 11,5	1/4 X 1.1/4	TID-10-8 - IDEROL 1113 E 1513 - 10 LAM	15
11771	11,41	8,0 X 9,5	1/4 X 1.1/4	TID-10-6 - IDEROL 1113 E 1513 - 11 LAM	15
11772	13,46	8,0 X 11,5	1/4 X 1.1/4	TID-10-8 - IDEROL 1113 E 1513 - 11 LAM	15
11773	11,41	8,0 X 9,5	1/4 X 1.1/4	TID-10-6 - IDEROL 1113 E 1513 - 12 LAM	15
11774	13,46	8,0 X 11,5	1/4 X 1.1/4	TID-10-8 - IDEROL 1113 E 1513 - 12 LAM	15
11775	12,29	8,0 X 10,5	1/4 X 1.1/4	TID-20-7 - IDEROL 1113 E 1513 - 11 LAM	15
11776	15,50	8,0 X 14,0	1/4 X 1.1/4	TID-20-10 - IDEROL 1113 E 1513 - 11 LAM	15
11777	12,29	8,0 X 10,5	1/4 X 1.1/4	TMB-10-8 - MERCEDES BENZ - 1620 - 11 LAM	15
11778	10,24	8,0 X 8,0	1/4 X 1.1/4	TGR-10-5 - GUERRA 1113, 1313 E 1513 - 10L	15
11779	12,29	8,0 X 10,5	1/4 X 1.1/4	TGR-10-7 - GUERRA 1113, 1313 E 1513 - 10L	15
11780	13,46	8,0 X 11,5	1/4 X 1.1/4	TGR-10-8 - GUERRA 1113, 1313 E 1513 - 10L	15
11781	12,29	8,0 X 10,5	1/4 X 1.1/4	TGR-20-7 - GUERRA TRAÇÃO - 10 LAM	15
11782	11,41	9,0 X 8,5	1/4 X 1.1/4	TIMP-10-6 - IMPERIAL MODERNO - 13 LAM	15
11783	14,63	9,0 X 11,0	1/4 X 1.1/4	TIMP-10-8 - IMPERIAL MODERNO - 13 LAM	15
11784	16,09	9,0 X 12,0	1/4 X 1.1/4	TIMP-10-9 - IMPERIAL MODERNO - 13 LAM	15
11785	11,41	9,0 X 8,5	1/4 X 1.1/4	TIMP-10-6 - IMPERIAL MODERNO - 11 LAM	15
11786	14,63	9,0 X 11,0	1/4 X 1.1/4	TIMP-10-8 - IMPERIAL MODERNO - 11 LAM	15
11787	16,09	9,0 X 12,0	1/4 X 1.1/4	TIMP-10-9 - IMPERIAL MODERNO - 11 LAM	15
11788	15,21	8,0 X 13,5	1/4 X 1.1/4	TFA-10-7 - FACCHINI - 1313 E 1513 - 9 LAM	15
11789	13,46	8,0 X 11,5	1/4 X 1.1/4	TSC-10-6 - SCHIFFER L-1313 - 8 LAM	15
11790	14,63	8,0 X 13,0	1/4 X 1.1/4	TUN-10-9 - UNIVERSAL TODAS - 13 LAM	15
11791	15,80	8,0 X 14,5	1/4 X 1.1/4	TUN-10-10 - UNIVERSAL TODAS - 13 LAM	15
11792	10,24	8,0 X 8,0	1/4 X 1.1/4	TNN-10-5 - NOMA 1113 - 10 LAM	15
11793	13,75	8,0 X 12,0	1/4 X 1.1/4	TNN-10-8 - NOMA 1113 - 10 LAM	15
11794	11,41	8,0 X 9,5	1/4 X 1.1/4	TNN-20-6 - NOMA 1113 - 11 LAM	15
11795	14,63	8,0 X 13,0	1/4 X 1.1/4	TNN-20-9 - NOMA 1113 - 11 LAM	15
11796	19,89	9,0 X 15,0	1/4 X 1.1/4	TVW-10-10 - VOLKS TRAÇÃO 23.220 - 11 LAM	15
11797	19,89	9,0 X 15,0	1/4 X 1.1/4	TVW-10-10 - VOLKS TRAÇÃO 23.220 - 13 LAM	15
11798	16,09	9,0 X 12,0	1/4 X 1.1/4	TVW-20-8 - VOLKS TRUCK 23.220 - 11 LAM	15
11799	17,55	9,0 X 13,0	1/4 X 1.1/4	TVW-20-9 - VOLKS TRUCK 23.220 - 11 LAM	15
11800	16,09	9,0 X 12,0	1/4 X 1.1/4	TVW-20-8 - VOLKS TRUCK 23.220 - 13 LAM	15
11801	17,55	9,0 X 13,0	1/4 X 1.1/4	TVW-20-9 - VOLKS TRUCK 23.220 - 13 LAM	15
11802	17,55	8,0 X 16,0	1/4 X 1.1/4	TRUCK ESPECIAL	15
11803	18,72	8,0 X 17,0	1/4 X 1.1/4	TRUCK ESPECIAL	15
11804	19,89	8,0 X 18,0	1/4 X 1.1/4	TRUCK ESPECIAL	15

ABRAÇADEIRA PARA FEIXES

ABRAÇADEIRA COM 3 FUROS

VOLKSWAGEN

CÓDIGO	PREÇO	MEDIDA	BITOLA	APLICAÇÃO	CX
11808	9,95	7,7 X 8,0	1/4 X 1.1/4	VW-30-4 - 6.80 À 7.110 - DIANT - 5 LAM	15
11809	9,07	8,0 X 6,5	1/4 X 1.1/4	VW-20-4 - 6.80, 6.90 E 7.90 - TR - 8 LAM	15
11810	9,65	8,0 X 7,5	1/4 X 1.1/4	VW-20-4 - 6.80, 6.90 E 7.90 - TR - 9 LAM	15
11811	9,07	8,0 X 6,5	1/4 X 1.1/4	VW-40-4 - 7.100 E 8.140 - TRAS - 6 LAM	15
11812	12,29	8,0 X 11,0	1/4 X 1.1/4	VW-40-6 - 7.100 E 8.140 - TRAS - 6 LAM	15
11813	9,65	8,0 X 7,5	1/4 X 1.1/4	VW-40-4 - 7.100 E 8.140 - TRAS - 7 LAM	15
11814	13,75	8,0 X 12,0	1/4 X 1.1/4	VW-40-6 - 7.100 E 8.140 - TRAS - 7 LAM	15
11815	6,73	7,7 X 6,0	1/4 X 1.1/4	VW-260-5 - 8.140 À 9.150 ESP - DT - 7 LAM	15
11816	10,53	9,0 X 7,5	1/4 X 1.1/4	VW-50-4 - 11.130 E 14.210 RM - TR - 6 LAM	15
11817	11,41	9,0 X 8,5	1/4 X 1.1/4	VW-50-4 - 11.130 E 14.210 RM - TR - 7 LAM	15
11818	12,58	9,0 X 9,5	1/4 X 1.1/4	VW-50-4 - 11.130 E 14.210 RM - TR - 8 LAM	15
11819	12,58	9,0 X 9,5	1/4 X 1.1/4	VW-270-5 - 13.130 RM - TR - 6 LAM	15
11820	7,61	9,0 X 6,5	1/4 X 1.1/4	VW-60-3 - 11.130 E 14.210 - AUX - 8 LAM	15
11821	10,82	9,0 X 8,0	1/4 X 1.1/4	VW-60-5 - 11.130 E 14.210 - AUX - 8 LAM	15
11822	10,24	7,7 X 8,5	1/4 X 1.1/4	VW-70-5 - 11.130 À 14.210 - DT - 7 LAM	15
11823	10,82	7,7 X 9,5	1/4 X 1.1/4	VW-70-5 - 11.130 À 14.210 - DT - 8 LAM	15
11824	9,65	7,7 X 8,0	1/4 X 1.1/4	VW-80-6 - 11.130, 13.130 E 14.210 - TR - 13L	15
11825	9,65	7,7 X 8,0	1/4 X 1.1/4	VW-80-6 - 11.130 À 14.210 - TR - 14 LAM	15
11826	10,24	8,0 X 8,0	1/4 X 1.1/4	VW-300-4 - 12.170 À 13.180 CARGO - DT - 9L	15
11827	11,12	8,0 X 9,0	1/4 X 1.1/4	VW-300-4 - 12.170 À 13.180 CGO - DT - 10 LAM	15
11828	11,12	8,0 X 9,0	1/4 X 1.1/4	VW-110-3 - 14.150 À 15.180 - DT - 10 LAM	15
11829	11,70	8,0 X 10,0	1/4 X 1.1/4	VW-110-5 - 14.150 À 15.180 - DT - 10 LAM	15
11830	12,29	8,0 X 10,5	1/4 X 1.1/4	VW-110-3 - 14.150 À 15.180 - DT - 11 LAM	15
11831	13,46	8,0 X 11,5	1/4 X 1.1/4	VW-110-5 - 14.150 À 15.180 - DT - 11 LAM	15
11832	6,14	7,7 X 5,5	1/4 X 1.1/4	VW-120-4 - 14.150 À 12.140 - TR - 12 LAM	15
11833	9,07	7,7 X 7,5	1/4 X 1.1/4	VW-120-4 - 14.150 À 12.140 C - TR - 13 LAM	15
11834	10,24	7,7 X 9,0	1/4 X 1.1/4	VW-130-5 - 14.220 E 12.140 L - TR - 8 LAM	15
11835	11,70	7,7 X 10,5	1/4 X 1.1/4	VW-130-5 - 14.220 E 12.140 L - TR - 9 LAM	15
11836	10,53	9,0 X 7,5	1/4 X 1.1/4	VW-140-4 - 16.210H - DT - 10 LAM	15
11837	11,41	9,0 X 8,5	1/4 X 1.1/4	VW-140-4 - 16.210H - DT - 11 LAM	15
11838	8,78	10,0 X 6,5	1/4 X 1.1/4	VW-160-4 - 15.220 À 26.300 - DT - 7 LAM	15
11839	10,82	10,0 X 8,0	1/4 X 1.1/4	VW-160-4 - 15.220 À 26.300 - DT - 8 LAM	15
11840	11,41	7,7 X 10,0	1/4 X 1.1/4	VW-170-6 - 16.220 À 17.210 L - TR - 10 LAM	15
11841	12,58	7,7 X 11,5	1/4 X 1.1/4	VW-170-6 - 16.220 À 17.210 L - TR - 11 LAM	15
11842	8,78	10,0 X 6,5	1/4 X 1.1/4	VW-190-3 - 24.220 - DIANT - 10 LAM	15
11843	11,70	10,0 X 9,5	1/4 X 1.1/4	VW-190-5 - 24.220 - DIANT - 10 LAM	15
11844	9,95	10,0 X 7,5	1/4 X 1.1/4	VW-190-3 - 24.220 - DIANT - 11 LAM	15
11845	13,16	10,0 X 10,5	1/4 X 1.1/4	VW-190-5 - 24.220 - DIANT - 11 LAM	15
11846	17,26	9,0 X 15,5	1/4 X 1.1/4	VW-280-8 - 22.220 À 26.310 TITAN - TR - 13L	15
11847	8,78	10,0 X 6,5	1/4 X 1.1/4	VW-210-4 - 35.300 E 18.310 TITAN - DT - 9 LAM	15
11848	10,24	10,0 X 7,5	1/4 X 1.1/4	VW-210-4 - 35.300 E 18.310 TIT. - DT - 10 LAM	15
11849	13,16	10,0 X 10,5	1/4 X 1.1/4	VW-310-5 - 18.310 TITAN SUBST - DT - 9 LAM	15
11850	15,50	10,0 X 11,5	1/4 X 1.1/4	VW-310-6 - 18.310 TITAN SUBST - DT - 9 LAM	15
11851	6,14	7,7 X 5,5	1/4 X 1.1/4	VW-220-4 - 35.300 À 17.210 - TR - 19 LAM	15
11852	12,87	7,7 X 12,0	1/4 X 1.1/4	VW-220-12 - 35.300 À 17.210 - TR - 19 LAM	15

ABRAÇADEIRA PARA FEIXES

ABRAÇADEIRA COM 3 FUROS

VOLVO

CÓDIGO	PREÇO	MEDIDA	BITOLA	APLICAÇÃO	CX
11859	11,70	10,0 X 9,0	1/4 X 1.1/4	VL-10-6 - N-1020, N-1220 E N-10 - DT - 10 LAM	15
11860	12,87	10,0 X 10,0	1/4 X 1.1/4	VL-10-6 - N-1020, N-1220 E N-10 - DT - 11 LAM	15
11861	12,87	10,0 X 10,0	1/4 X 1.1/4	VL-20-7 - N-1020, N-1220 E N-10 - TR - 17 LAM	15
11862	14,04	10,0 X 11,0	1/4 X 1.1/4	VL-20-7 - N-1020, N-1220 E N-10 - TR - 18 LAM	15
11863	11,12	10,0 X 8,5	1/4 X 1.1/4	VL-30-6 - N-1020 E N-1220 - AUX - 10 LAM	15
11864	8,48	10,0 X 6,5	1/4 X 1.1/4	VL-40-4 - N-10 E N-12 - DT - 8 LAM	15
11865	9,07	10,0 X 7,0	1/4 X 1.1/4	VL-50-3 - N-10 E N-12 - TR - 7 LAM	15
11866	8,48	10,0 X 6,5	1/4 X 1.1/4	VL-60-3 - N-10 E N-12 - AUX - 6 LAM	15
11867	8,48	10,0 X 6,5	1/4 X 1.1/4	VL-80-4 - 340 E NL-10 - DT - 11 LAM	15
11868	10,24	10,0 X 7,5	1/4 X 1.1/4	VL-80-4 - 340 E NL-10 - DT - 12 LAM	15
11869	10,24	10,0 X 7,5	1/4 X 1.1/4	VL-90-4 - 340 E NL-10 - TR - 8 LAM	15
11870	11,70	10,0 X 9,0	1/4 X 1.1/4	VL-90-4 - 340 E NL-10 - TR - 9 LAM	15
11871	8,48	10,0 X 6,5	1/4 X 1.1/4	VL-100-4 - 340 E NL-10 - AUX - 8 LAM	15
11872	16,67	9,0 X 15,0	1/4 X 1.1/4	VL-110-5 - TRAÇADO - 6 X 4 - TR - 9 LAM	15
11873	16,67	9,0 X 15,0	1/4 X 1.1/4	VL-150-5 - FM / FH / NH - 12 - 6 X4 - TR - 9 LAM	15
11874	16,67	9,0 X 15,0	1/4 X 1.1/4	VL-160-5 - FM/FH/NH - 12 - 6X4 SUB - TR - 9L	15

WILLYS

CÓDIGO	PREÇO	MEDIDA	BITOLA	APLICAÇÃO	CX
11881	3,90	4,5 X 4,5	3/16 X 7/8	WIL-10-4 - JEEP - DIANT - 12 LAM	15
11882	7,80	4,5 X 8,5	3/16 X 7/8	WIL-10-10 - JEEP - DIANT - 12 LAM	15
11883	3,90	4,5 X 4,5	3/16 X 7/8	WIL-20-4 - JEEP - TRAS - 10 LAM	15
11884	6,24	4,5 X 7,0	3/16 X 7/8	WIL-20-8 - JEEP - TRAS - 10 LAM	15
11885	3,90	4,5 X 4,5	3/16 X 7/8	WIL-30-4 - PICK-UP F-75 E RURAL - DT - 10L	15
11886	5,46	4,5 X 6,0	3/16 X 7/8	WIL-30-7 - PICK-UP F-75 E RURAL - DT - 10L	15
11887	4,29	4,5 X 5,0	3/16 X 7/8	WIL-30-4 - PICK-UP F-75 E RURAL - DT - 11L	15
11888	6,24	4,5 X 7,0	3/16 X 7/8	WIL-30-7 - PICK-UP F-75 E RURAL - DT - 11L	15
11889	4,68	5,8 X 6,5	3/16 X 1"	WIL-40-5 - PICK-UP F-74 E RURAL - TR - 10L	15
11890	5,27	5,8 X 7,5	3/16 X 1"	WIL-40-7 - PICK-UP F-74 E RURAL - TR - 10L	15
11891	4,97	5,8 X 7,0	3/16 X 1"	WIL-40-5 - PICK-UP F-74 E RURAL - TR - 11L	15
11892	6,14	5,8 X 8,5	3/16 X 1"	WIL-40-7 - PICK-UP F-74 E RURAL - TR - 11L	15
11893	3,90	4,5 X 4,5	3/16 X 7/8	WIL-50-4 - RURAL -TRAS - 10 LAM	15
11894	6,24	4,5 X 7,0	3/16 X 7/8	WIL-50-8 - RURAL -TRAS - 10 LAM	15
11895	3,90	4,5 X 4,5	3/16 X 7/8	WIL-60-4 - JEEP - DIANT - 9 LAM	15
11896	5,85	4,5 X 6,5	3/16 X 7/8	WIL-60-7 - JEEP - DIANT - 9 LAM	15
11897	3,90	4,5 X 4,0	3/16 X 7/8	WIL-70-4 - JEEP - TRAS - 9 LAM	15
11898	5,85	4,5 X 6,5	3/16 X 7/8	WIL-70-8 - JEEP - TRAS - 9 LAM	15

ABRAÇADEIRA PARA FEIXES

ABRAÇADEIRA COM 4 FUROS

AGRALE

CÓDIGO	PREÇO	MEDIDA	BITOLA	APLICAÇÃO	CX
11904	5,27	7,0 X 7,5	3/16 X 1"	AG-80-4 - 5.000 À 7.500-TD SUBST - DT - 5 LAM	15
11905	6,14	7,0 X 9,0	3/16 X 1"	AG-80-4 - 5.000 À 7.500-TD SUBST - DT - 6 LAM	15

FORD

CÓDIGO	PREÇO	MEDIDA	BITOLA	APLICAÇÃO	CX
11910	4,68	6,5 X 7,5	3/16 X 1"	FO-110-7 - F-14.000 E PIT-BULL - DIANT - 14L	15
11911	7,31	6,5 X 11,5	3/16 X 1"	FO-110-12 - F-14.000 E PIT-BULL - DIANT - 14L	15

IMPORTADO

CÓDIGO	PREÇO	MEDIDA	BITOLA	APLICAÇÃO	CX
11918	3,51	6,0 X 5,0	3/16 X 1"	KIA-10-4 - BESTA 2.7 - TRAS - 6 LAM	15
11919	4,68	6,0 X 7,0	3/16 X 1"	KIA-10-5 - BESTA 2.7 - TRAS - 6 LAM	15
11920	4,10	6,0 X 6,0	3/16 X 1"	KIA-10-4 - BESTA 2.7 - TRAS - 7 LAM	15
11921	5,27	6,0 X 8,0	3/16 X 1"	KIA-10-5 - BESTA 2.7 - TRAS - 7 LAM	15

MERCEDES BENZ

CÓDIGO	PREÇO	MEDIDA	BITOLA	APLICAÇÃO	CX
11928	4,10	6,0 X 6,0	3/16 X 1"	MB-10-4 - 608 À 708 - DIANT - 8 LAM	15
11929	5,56	6,0 X 8,5	3/16 X 1"	MB-10-6 - 608 À 708 - DIANT - 8 LAM	15
12000	4,68	6,0 X 7,0	3/16 X 1"	MB-10-4 - 608 À 708 - DIANT - 9 LAM	15
12001	6,14	6,0 X 9,5	3/16 X 1"	MB-10-6 - 608 À 708 - DIANT - 9 LAM	15
12002	4,97	6,0 X 7,5	3/16 X 1"	MB-20-5 - 608 - TRAS - 11 LAM	15
12003	7,61	6,0 X 12,0	3/16 X 1"	MB-20-9 - 608 - TRAS - 11 LAM	15
12004	5,56	6,0 X 8,5	3/16 X 1"	MB-20-5 - 608 - TRAS - 12 LAM	15
12005	8,48	6,0 X 13,0	3/16 X 1"	MB-20-9 - 608 - TRAS - 12 LAM	15
12006	3,51	7,0 X 4,5	3/16 X 1"	MB-30-3 - 709 - DIANT - 7 LAM	15
12007	5,27	7,0 X 6,5	3/16 X 1"	MB-30-6 - 709 - DIANT - 7 LAM	15
12008	4,39	7,0 X 5,5	3/16 X 1"	MB-30-3 - 709 - DIANT - 8 LAM	15
12009	6,14	7,0 X 7,5	3/16 X 1"	MB-30-6 - 709 - DIANT - 8 LAM	15
12010	6,14	7,0 X 7,5	3/16 X 1"	MB-40-5 - 709 - TRAS - 9 LAM	15
12011	9,07	7,0 X 11,0	3/16 X 1"	MB-40-8 - 709 - TRAS - 9 LAM	15
12012	7,02	7,0 X 8,5	3/16 X 1"	MB-40-5 - 709 - TRAS - 10 LAM	15
12013	9,95	7,0 X 12,0	3/16 X 1"	MB-40-8 - 709 - TRAS - 10 LAM	15
12014	15,80	7,0 X 14,5	1/4 X 1.1/4	MB-40-5 - 709 ESPECIAL - TRAS - 9 LAM	15
12015	16,67	7,0 X 15,5	1/4 X 1.1/4	MB-40-8 - 709 ESPECIAL - TRAS - 9 LAM	15
12016	4,39	7,0 X 5,5	3/16 X 1"	MB-500-3 - 710 À 914 - DIANT - 7 LAM	15
12017	4,39	7,0 X 7,5	3/16 X 1"	MB-500-5 - 710 À 914 - DIANT - 7 LAM	15
12018	5,27	7,0 X 6,5	3/16 X 1"	MB-500-3 - 710 À 914 - DIANT - 8 LAM	15
12019	7,02	7,0 X 8,5	3/16 X 1"	MB-500-5 - 710 À 914 - DIANT - 8 LAM	15

ABRAÇADEIRA PARA FEIXES

ABRAÇADEIRA COM 4 FUROS

MERCEDES BENZ

CÓDIGO	PREÇO	MEDIDA	BITOLA	APLICAÇÃO	CX
12020	4,10	7,0 X 5,0	3/16 X 1"	MB-490-3 - 812 E 912 - DIANT - 7 LAM	15
12021	5,27	7,0 X 6,5	3/16 X 1"	MB-490-6 - 812 E 912 - DIANT - 7 LAM	15
12022	4,39	7,0 X 5,5	3/16 X 1"	MB-490-3 - 812 E 912 - DIANT - 8 LAM	15
12023	4,39	7,0 X 7,5	3/16 X 1"	MB-490-6 - 812 E 912 - DIANT - 8 LAM	15
12024	8,48	8,0 X 6,5	1/4 X 1.1/4	MB-560-3 - 321 / 1111 - TRAS - 9 LAM	15
12025	11,70	8,0 X 9,0	1/4 X 1.1/4	MB-560-5 - 321 / 1111 - TRAS - 9 LAM	15
12026	9,95	8,0 X 7,5	1/4 X 1.1/4	MB-560-3 - 321 / 1111 - TRAS - 10 LAM	15
12027	12,58	8,0 X 10,0	1/4 X 1.1/4	MB-560-5 - 321 / 1111 - TRAS - 10 LAM	15
12028	5,27	7,0 X 6,5	3/16 X 1"	MB-50-4 - 1113 À 1118 - DIANT - 10 LAM	15
12029	8,19	7,0 X 10,0	3/16 X 1"	MB-50-7 - 1113 À 1118 - DIANT - 10 LAM	15
12030	6,14	7,0 X 7,5	3/16 X 1"	MB-50-4 - 1113 À 1118 - DIANT - 11 LAM	15
12031	9,07	7,0 X 11,0	3/16 X 1"	MB-50-7 - 1113 À 1118 - DIANT - 11 LAM	15
12032	8,48	8,0 X 6,5	1/4 X 1.1/4	MB-60-3 - 1113 À 1118 - TRAS - 9 LAM	15
12033	11,70	8,0 X 9,0	1/4 X 1.1/4	MB-60-5 - 1113 À 1118 - TRAS - 9 LAM	15
12034	9,95	8,0 X 7,5	1/4 X 1.1/4	MB-60-3 - 1113 À 1118 - TRAS - 10 LAM	15
12035	12,58	8,0 X 10,0	1/4 X 1.1/4	MB-60-5 - 1113 À 1118 - TRAS - 10 LAM	15
12036	5,27	7,0 X 6,5	3/16 X 1"	MB-360-3 - 1513 À 2325 - DIANT - 10 LAM	15
12037	8,19	7,0 X 10,0	3/16 X 1"	MB-360-6 - 1513 À 2325 - DIANT - 10 LAM	15
12038	6,14	7,0 X 7,5	3/16 X 1"	MB-360-3 - 1513 À 2325 - DIANT - 11 LAM	15
12039	9,07	7,0 X 11,0	3/16 X 1"	MB-360-6 - 1513 À 2325 - DIANT - 11 LAM	15
12040	8,48	8,0 X 6,5	1/4 X 1.1/4	MB-280-4 - 1214 À 1418 - TRAS - 10 LAM	15
12041	12,58	8,0 X 10,0	1/4 X 1.1/4	MB-280-7 - 1214 À 1418 - TRAS - 10 LAM	15
12042	9,95	8,0 X 7,5	1/4 X 1.1/4	MB-280-4 - 1214 À 1418 - TRAS - 11 LAM	15
12043	13,16	8,0 X 11,0	1/4 X 1.1/4	MB-280-7 - 1214 À 1418 - TRAS - 11 LAM	15
12044	9,36	9,0 X 7,5	1/4 X 1.1/4	MB-190-4 - 1935 À 1941 - DIANT - 7 LAM	15
12045	10,24	9,0 X 8,5	1/4 X 1.1/4	MB-190-4 - 1935 À 1941 - DIANT - 8 LAM	15
12046	9,07	10,0 X 7,0	1/4 X 1.1/4	MB-200-3 - 1935 À 1941 - TRAS - 5 LAM	15
12047	10,82	10,0 X 8,5	1/4 X 1.1/4	MB-200-3 - 1935 À 1941 - TRAS - 6 LAM	15
12048	9,36	9,0 X 7,5	1/4 X 1.1/4	MB-620-3 - 2638 - DIANT - 8 LAM	15
12049	11,41	9,0 X 9,5	1/4 X 1.1/4	MB-620-4 - 2638 - DIANT - 8 LAM	15
12050	11,12	9,0 X 9,0	1/4 X 1.1/4	MB-620-3 - 2638 - DIANT - 9 LAM	15
12051	12,87	9,0 X 11,0	1/4 X 1.1/4	MB-620-4 - 2638 - DIANT - 9 LAM	15

ÔNIBUS - FORD

CÓDIGO	PREÇO	MEDIDA	BITOLA	APLICAÇÃO	CX
12270	16,09	10,0 X 12,0	1/4 X 1.1/4	FO-230-4 - FORD BUS - DIANT - 10 LAM	15
12271	19,89	10,0 X 15,0	1/4 X 1.1/4	FO-230-5 - FORD BUS - DIANT - 10 LAM	15
12272	16,09	10,0 X 12,0	1/4 X 1.1/4	FO-230-4 - FORD BUS - DIANT - 10 LAM ESP	15
12273	9,07	7,7 X 7,5	1/4 X 1.1/4	FO-220-4 - FORD BUS - TRAS - 9 LAM	15
12274	10,24	7,7 X 9,0	1/4 X 1.1/4	FO-220-5 - FORD BUS - TRAS - 10 LAM	15
12275	10,24	7,7 X 9,0	1/4 X 1.1/4	FO-220-5 - FORD BUS - TRAS - 12 LAM	15
12276	20,48	7,7 X 18,0	1/4 X 1.1/4	FO-220-10 - FORD BUS - TRAS - 12 LAM ESP	15

ABRAÇADEIRA PARA FEIXES

ABRAÇADEIRA COM 4 FUROS

ÔNIBUS - MERCEDES BENZ

CÓDIGO	PREÇO	MEDIDA	BITOLA	APLICAÇÃO	CX
12282	5,27	7,0 X 6,5	3/16 X 1"	MB-330-3 - OF-1313 - DIANT - 10 LAM	15
12283	8,48	7,0 X 10,5	3/16 X 1"	MB-330-6 - OF-1313 - DIANT - 10 LAM	15
12284	6,14	7,0 X 7,5	3/16 X 1"	MB-330-3 - OF-1313 - DIANT - 11 LAM	15
12285	9,95	7,0 X 12,0	3/16 X 1"	MB-330-6 - OF-1313 - DIANT - 11 LAM	15
12286	8,19	7,0 X 9,0	3/16 X 1"	MB-330-3 - OF-1313 - DIANT - 12 LAM	15
12287	11,12	7,0 X 13,5	3/16 X 1"	MB-330-6 - OF-1313 - DIANT - 12 LAM	15
12288	7,02	7,0 X 8,5	3/16 X 1"	MB-610-4 - OF-1318 2ª SÉRIE - DIANT - 8 LAM	15
12289	10,53	7,0 X 13,0	3/16 X 1"	MB-610-7 - OF-1318 2ª SÉRIE - DIANT - 8 LAM	15
12290	9,65	8,0 X 7,5	1/4 X 1.1/4	MB-250-4 - O-355 E O-362 - TRAS - 11 LAM	15
12291	13,75	8,0 X 12,5	1/4 X 1.1/4	MB-250-8 - O-355 E O-362 - TRAS - 11 LAM	15
12292	10,53	8,0 X 8,5	1/4 X 1.1/4	MB-250-4 - O-355 E O-362 - TRAS - 12 LAM	15
12293	15,60	8,0 X 14,0	1/4 X 1.1/4	MB-250-8 - O-355 E O-362 - TRAS - 12 LAM	15
12294	10,24	8,0 X 8,0	1/4 X 1.1/4	MB-260-4 - O-364 - TRAS - 12 LAM	15
12295	15,80	8,0 X 14,5	1/4 X 1.1/4	MB-260-8 - O-364 - TRAS - 12 LAM	15

SCÂNIA

CÓDIGO	PREÇO	MEDIDA	BITOLA	APLICAÇÃO	CX
12066	9,07	9,0 X 7,0	1/4 X 1.1/4	SC-10-3 - 110 E 111 LONGO - DIANT - 8 LAM	15
12067	12,87	9,0 X 11,0	1/4 X 1.1/4	SC-10-7 - 110 E 111 LONGO - DIANT - 8 LAM	15
12068	9,95	9,0 X 8,0	1/4 X 1.1/4	SC-10-3 - 110 E 111 LONGO - DIANT - 9 LAM	15
12069	14,04	9,0 X 12,0	1/4 X 1.1/4	SC-10-7 - 110 E 111 LONGO - DIANT - 9 LAM	15
12070	10,24	9,0 X 8,5	1/4 X 1.1/4	SC-20-6 - 100, 110, 111 E L-75 - TR - 15 LAM	15
12071	21,65	9,0 X 17,5	1/4 X 1.1/4	SC-20-14 - 100, 110, 111 E L-75 - TR - 15 LAM	15
12072	9,07	9,0 X 7,0	1/4 X 1.1/4	SC-30-3 - 112 À 142 - DIANT - 7 LAM	15
12073	12,29	9,0 X 10,0	1/4 X 1.1/4	SC-30-5 - 112 À 142 - DIANT - 7 LAM	15
12074	9,95	9,0 X 8,0	1/4 X 1.1/4	SC-30-3 - 112 À 142 - DIANT - 8 LAM	15
12075	12,87	9,0 X 11,0	1/4 X 1.1/4	SC-30-5 - 112 À 142 - DIANT - 8 LAM	15
12076	9,07	9,0 X 7,0	1/4 X 1.1/4	SC-40-3 - 112 À 142 - TRAS - 7 LAM	15
12077	13,46	9,0 X 11,5	1/4 X 1.1/4	SC-40-6 - 112 À 142 - TRAS - 7 LAM	15
12078	9,65	9,0 X 8,0	1/4 X 1.1/4	SC-40-3 - 112 À 142 - TRAS - 8 LAM	15
12079	14,63	9,0 X 12,5	1/4 X 1.1/4	SC-40-6 - 112 À 142 - TRAS - 8 LAM	15
12080	7,61	9,0 X 6,5	1/4 X 1.1/4	SC-50-3 - 112 À 142 - AUX - 6 LAM	15
12081	7,61	9,0 X 6,5	1/4 X 1.1/4	SC-70-3 - 113 À 114 - DIANT - 7 LAM	15
12082	11,12	9,0 X 9,5	1/4 X 1.1/4	SC-70-5 - 113 À 114 - DIANT - 7 LAM	15
12083	9,95	9,0 X 8,0	1/4 X 1.1/4	SC-70-3 - 113 À 114 - DIANT - 8 LAM	15
12084	12,87	9,0 X 11,0	1/4 X 1.1/4	SC-70-5 - 113 À 114 - DIANT - 8 LAM	15
12085	11,12	9,0 X 9,5	1/4 X 1.1/4	SC-90-5 - 124-G SUBST - DIANT - 5 LAM	15
12086	7,61	9,0 X 6,5	1/4 X 1.1/4	SC-80-3 - 113 À 124 - TRAS - 7 LAM	15
12087	12,87	9,0 X 11,0	1/4 X 1.1/4	SC-80-6 - 113 À 124 - TRAS - 7 LAM	15
12088	10,24	9,0 X 8,5	1/4 X 1.1/4	SC-80-3 - 113 À 124 - TRAS - 8 LAM	15
12089	14,63	9,0 X 12,5	1/4 X 1.1/4	SC-80-6 - 113 À 124 - TRAS - 8 LAM	15
12090	7,61	9,0 X 6,5	1/4 X 1.1/4	SC-60-3 - 113 À 124 - AUX - 6 LAM	15

ABRAÇADEIRA PARA FEIXES

ABRAÇADEIRA COM 4 FUROS

SCÂNIA

CÓDIGO	PREÇO	MEDIDA	BITOLA	APLICAÇÃO	CX
12091	9,95	9,0 X 8,0	1/4 X 1.1/4	SC-100-4 - 113 À 124 - TRAS - 12 LAM	15
12092	19,89	9,0 X 17,0	1/4 X 1.1/4	SC-100-10 - 113 À 124 - TRAS - 12 LAM	15
12093	11,12	9,0 X 9,5	1/4 X 1.1/4	SC-100-4 - 113 À 124 - TRAS - 13 LAM	15
12094	21,65	9,0 X 18,5	1/4 X 1.1/4	SC-100-10 - 113 À 124 - TRAS - 13 LAM	15

TRUCK

CÓDIGO	PREÇO	MEDIDA	BITOLA	APLICAÇÃO	CX
12100	11,70	8,0 X 9,5	1/4 X 1.1/4	TRD-10-6 - 1111 E 1113 - ROD - 10 LAM	15
12101	14,33	8,0 X 11,5	1/4 X 1.1/4	TRD-10-8 - 1111 E 1113 - ROD - 10 LAM	15
12102	16,97	8,0 X 13,5	1/4 X 1.1/4	TRD-10-9 - 1111 E 1113 - ROD - 10 LAM	15
12103	12,58	8,0 X 10,0	1/4 X 1.1/4	TMB-30-7 - 1620 MERCEDES BENZ - 11 LAM	15
12104	18,14	8,0 X 14,5	1/4 X 1.1/4	TMB-30-7 - 1620 MB REFORÇADO - 11 LAM	15
12105	19,60	8,0 X 15,5	1/4 X 1.1/4	TMB-30-7 - 1620 MB REFORÇADO - 22 LAM	15

VOLKSWAGEN

CÓDIGO	PREÇO	MEDIDA	BITOLA	APLICAÇÃO	CX
12112	11,99	10,0 X 9,0	1/4 X 1.1/4	VW-200-5 - 24.220 TRAÇ. E 2423 - TR - 13L	15
12113	13,16	10,0 X 10,5	1/4 X 1.1/4	VW-200-6 - 24.220 TRAÇ. E 2423 - TR - 13L	15
12114	13,46	10,0 X 10,0	1/4 X 1.1/4	VW-290-5 - 24.220 TRAÇADO - TRAS - 13 LAM	15
12115	16,09	10,0 X 12,0	1/4 X 1.1/4	VW-290-6 - 24.220 TRAÇADO - TRAS - 13 LAM	15

VOLVO

CÓDIGO	PREÇO	MEDIDA	BITOLA	APLICAÇÃO	CX
12122	11,41	9,0 X 9,5	1/4 X 1.1/4	VL-170-5 - FH-12 SUBST - DIANT - 9 LAM	15

ABRAÇADEIRA PARA FEIXES

ABRAÇADEIRA COM 1 FURO VIRADA

AGRALE

CÓDIGO	PREÇO	MEDIDA	BITOLA	APLICAÇÃO	CX
12128	4,10	5,8 X 5,0	3/16 X 1"	AG-30-3 - 1.600 - AUXILAR - 6 LAM	15

CARRETA AGRÍCOLA

CÓDIGO	PREÇO	MEDIDA	BITOLA	APLICAÇÃO	CX
11455	8,00	5,1 X 9,0	3/16 X 1"	ABC-10-8 - ASA BRANCA 6 TON - 13 LAM	15
11456	4,97	5,1 X 7,5	3/16 X 1"	ABC-40-7 - ASA BRANCA 6 TON - 13 LAM	15
11457	4,68	5,1 X 7,0	3/16 X 1"	ABC-20-6 - ASA BRANCA 4 TON - 9 LAM	15
11458	8,00	5,1 X 9,0	3/16 X 1"	ABC-10-8 - CEMAG 6 TON - 13 LAM	15
11459	4,68	5,1 X 7,0	3/16 X 1"	ABC-20-6 - CEMAG 4 TON ANTIGA - 9 LAM	15
11460	5,46	5,1 X 6,0	3/16 X 7/8	ABC-30-6 - CEMAG 4 TON MODERNA - 8 LAM	15
11461	7,80	5,1 X 8,5	3/16 X 7/8	MGS-10-8 - MGS 6 TON - 13 LAM	15

CARRETA REBOQUE

CÓDIGO	PREÇO	MEDIDA	BITOLA	APLICAÇÃO	CX
12133	3,90	5,1 X 4,0	3/16 X 7/8	CQ-10-2 - QUIXADÁ - 3 LAM	15
12134	3,90	4,5 X 3,5	3/16 X 7/8	CSB-10-2 - SÃO BENTO / BUENO - 3 LAM	15
12135	4,29	4,5 X 4,5	3/16 X 7/8	BF-10-4 - BUENO FORTALEZA - 5 LAM	15
12136	4,29	4,5 X 4,5	3/16 X 7/8	BF-20-4 - BUENO FORTALEZA II - 7 LAM	15
12137	5,07	5,1 X 5,0	3/16 X 7/8	CL-10-3 - LARECAR I - 4 LAM	15
12138	5,07	5,1 X 5,0	3/16 X 7/8	CL-20-3 - LARECAR II - 4 LAM	15
12139	4,68	4,5 X 5,0	3/16 X 7/8	CL-30-4 - LARECAR III - 5 LAM	15
12140	4,29	4,5 X 4,0	3/16 X 7/8	CSC-10-3 - SANTA CRUZ - 3 LAM	15
12141	4,39	5,8 X 5,5	3/16 X 1"	CC-10-3 - CHICO CITY - 3 LAM	15
12142	4,39	5,8 X 5,5	3/16 X 1"	JT-10-3 - J. TRAJANO - 4 LAM	15
12143	3,90	4,5 X 4,0	3/16 X 7/8	CRS-10-3 - R. S. LOCADORA - 5 LAM	15
12144	4,29	4,5 X 4,5	3/16 X 7/8	TX-10-4 - TEXAS - 5 LAM	15
12145	4,68	4,5 X 5,5	3/16 X 7/8	TX-10-4 - TEXAS - 6 LAM	15
12146	4,68	4,5 X 5,5	3/16 X 7/8	TX-20-5 - TEXAS - 7 LAM	15
12147	3,90	4,5 X 3,5	3/16 X 7/8	TX-30-2 - TEXAS - 2 LAM	15
12148	4,97	5,1 X 7,5	3/16 X 1"	TX-40-6 - TEXAS - 8 LAM	15
12149	3,90	4,5 X 4,0	3/16 X 7/8	TX-50-3 - TEXAS - 3 LAM	15
12150	3,90	4,5 X 4,5	3/16 X 7/8	PTT-10-4 - POWER TEC TRUCK - 4 LAM	15
12151	4,29	4,5 X 4,5	3/16 X 1"	PTN-10-4 - POWER TEC NÁUTICO - 4 LAM	15
12152	5,07	5,1 X 5,0	3/16 X 7/8	EL-10-3 - EL-DORADO I - 4 LAM	15
12153	5,07	5,1 X 5,0	3/16 X 7/8	EL-20-2 - EL-DORADO II - 3 LAM	15
12154	4,68	4,5 X 5,0	3/16 X 7/8	CMU-30-5 - CARRETA MULTIRÃO	15
12155	5,61	4,5 X 6,0	3/16 X 7/8	REBOQUE TABULEIRO	15
12156	4,41	4,0 X 5,0	3/16 X 7/8	MB-820-4 - CABINE 1113	15

ABRAÇADEIRA PARA FEIXES

ABRAÇADEIRA COM 1 FURO VIRADA

CHEVROLET

CÓDIGO	PREÇO	MEDIDA	BITOLA	APLICAÇÃO	CX
12160	4,39	5,8 X 5,5	3/16 X 1"	CHE-10-3 - D-10 E D-20 ANT - TRAS - 9 LAM	15
12161	4,97	5,8 X 6,5	3/16 X 1"	CHE-10-3 - D-10 E D-20 ANT - TRAS - 10 LAM	15
12162	4,10	5,8 X 5,0	3/16 X 1"	CHE-150-3 - C-10 E C-14 - TRAS - 8 LAM	15
12163	4,68	5,8 X 6,0	3/16 X 1"	CHE-150-3 - C-10 E C-14 - TRAS - 9 LAM	15
12164	4,68	6,5 X 5,5	3/16 X 1"	CHE-20-3 - S-10 - TRAS - 4 LAM	15
12165	3,80	6,5 X 4,5	3/16 X 1"	CHE-160-3 - D-20 INTER. - TRAS - 9 LAM	15
12166	4,68	6,5 X 5,5	3/16 X 1"	CHE-160-3 - D-20 INTER. - TRAS - 10 LAM	15
12167	4,68	6,5 X 5,5	3/16 X 1"	CHE-190-3 - BLAZER - TRAS - 4 LAM	15
12168	4,39	7,0 X 5,0	3/16 X 1"	CHE-200-2 - PICK-UP CORSA - TRAS - 2 LAM	15
12169	4,10	6,5 X 5,0	3/16 X 1"	CHE-70-3 - D-40 - AUX - 6 LAM	15
12170	5,27	7,7 X 6,0	3/16 X 1"	CHE-170-3 - D-60 - AUX - 8 LAM	15

FIAT

CÓDIGO	PREÇO	MEDIDA	BITOLA	APLICAÇÃO	CX
12175	2,93	7,0 X 3,5	3/16 X 1"	FT-20-2 - FIORINO ELETRONIC - TRAS - 2L	15
12176	3,80	7,0 X 5,0	3/16 X 1"	FT-50-2 - PÁLIO ESTRADA CAB C. - TR - 2L	15

FORD

CÓDIGO	PREÇO	MEDIDA	BITOLA	APLICAÇÃO	CX
12177	4,10	5,8 X 5,0	3/16 X 1"	FO-10-3 - PAMPA - TRAS - 6 LAM	15
12178	3,80	6,0 X 4,5	3/16 X 1"	FO-190-2 - COURRIER SUBST - TR - 2 LAM	15
12179	4,39	5,8 X 5,5	3/16 X 1"	FO-20-4 - F-1000 - TRAS - 9 LAM	15
12180	4,97	5,8 X 6,5	3/16 X 1"	FO-20-4 - F-1000 - TRAS - 10 LAM	15
12181	3,80	6,5 X 4,5	3/16 X 1"	FO-180-2 - RANGER - TRAS - 3 LAM	15
12182	3,51	7,7 X 4,0	3/16 X 1"	FO-200-2 - F-250 - TRAS - 5 LAM	15
12183	5,56	7,7 X 6,5	3/16 X 1"	FO-200-4 - F-250 - TRAS - 5 LAM	15
12184	6,44	7,7 X 7,5	3/16 X 1"	FO-200-4 - F-250 - TRAS - 6 LAM	15
12185	2,93	6,5 X 3,5	3/16 X 1"	FO-60-4 - F-400 E F-4.000 ANT - AUX - 9 LAM	15
11532	7,90	7,7 X 8,0	1/4 X 1.1/4	FO-160-4 - F-4.000 SUBSTITUIÇÃO - DT - 4L	15
12186	5,27	7,7 X 6,0	3/16 X 1"	FO-210-2 - F-4.000 SUBST - AUX - 2 LAM	15
12187	5,27	7,7 X 6,0	3/16 X 1"	FO-330-2 - F-4.000 SUBST - AUX - 2 LAM	15
12188	5,27	7,7 X 6,0	3/16 X 1"	FO-40-3 - F-600 À F-15.000 - AUX - 8 LAM	15
12189	5,56	7,7 X 6,5	3/16 X 1"	FO-320-3 - F-12.000 - AUX - 8 LAM	15
12190	10,24	7,7 X 8,0	1/4 X 1.1/4	FO-290-3 - F-14.000 - AUX - 3 LAM	15
12191	8,19	7,7 X 6,5	1/4 X 1.1/4	FO-150-5 - CARGO 1514 À 1617 - AUX - 12L	15
12192	3,51	7,7 X 4,0	3/16 X 1"	FO-380-3 - CARGO 1313 À 1419 - AUX - 5 LAM	15

ABRAÇADEIRA PARA FEIXES

ABRAÇADEIRA COM 1 FURO VIRADA

GMC

CÓDIGO	PREÇO	MEDIDA	BITOLA	APLICAÇÃO	CX
12197	10,53	9,0 X 7,5	1/4 X 1.1/4	GMC-10-3 - 12.170 - DIANT - 3 LAM	15

IMPLEMENTOS AGRÍCOLA

CÓDIGO	PREÇO	MEDIDA	BITOLA	APLICAÇÃO	CX
12201	5,27	7,0 X 6,5	3/16 X 1"	HA-10-3 - HASTE AGRÍCOLA - 3 LAM	15
12202	4,29	5,1 X 4,5	3/16 X 7/8	HA-20-3 - HASTE AGRÍCOLA - 3 LAM	15

IMPORTADO

CÓDIGO	PREÇO	MEDIDA	BITOLA	APLICAÇÃO	CX
12204	16,50	8,0 X 10,0	1.1/2 X 1/4	AGI-40-3 - VOLARE SENIOR A8 - TR - 3 LAM	15
12205	3,80	5,1 X 5,5	3/16 X 1"	AM-30-4 - TOWNER - TRAS - 4 LAM	15
12206	2,93	6,5 X 3,0	3/16 X 1"	DCH-10-4 - CHEROKEE - TRAS - 4 LAM	15
12207	7,31	8,0 X 6,0	1/4 X 1.1/4	FTI-10-2 - DUCATO SUBST - TRAS - 2 LAM	15
12208	9,07	8,0 X 7,5	1/4 X 1.1/4	FTI-10-3 - DUCATO SUBST - TRAS - 3 LAM	15
12209	3,80	6,5 X 4,5	3/16 X 1"	FO-180-2 - RANGER - TRAS - 3 LAM	15
12210	3,22	7,0 X 4,5	3/16 X 1"	HY-10-2 - H-100, GS-100 E LX-100 - TRAS - 4L	15
12211	3,80	6,0 X 5,5	3/16 X 1"	KIA-20-3 - BESTA 2.2 - TRAS - 5 LAM	15
12212	4,10	6,0 X 6,0	3/16 X 1"	KIA-20-3 - BESTA 2.2 - TRAS - 6 LAM	15
12213	3,22	6,0 X 4,0	3/16 X 1"	KIA-30-3 - BESTA 2.2 TRAS - 3 LAM	15
12214	3,51	6,0 X 5,0	3/16 X 1"	KIA-30-3 - BESTA 2.2 TRAS - 4 LAM	15
12215	5,27	7,0 X 6,5	3/16 X 1"	KIA-40-4 - GRAN BESTA - TRAS - 4 LAM	15
12216	5,27	7,0 X 6,5	3/16 X 1"	MB-150-3 - FURGÃO MB 180-D - TRAS - 3L	15
12217	5,27	7,0 X 6,5	3/16 X 1"	MBI-10-3 - SPRINTER 310-D - TRAS - 4 LAM	15
12218	4,97	7,0 X 6,0	3/16 X 1"	MTS-20-3 - L-200 4 X 2 - TRAS - 5 LAM	15
12219	3,51	6,0 X 5,0	3/16 X 1"	TOI-40-3 - HILUX 4 X 4 - TRAS - 5 LAM	15
12220	3,51	6,0 X 5,0	3/16 X 1"	TOI-70-3 - HILUX 4 X 4 - TRAS - 4 LAM	15
12221	3,51	6,0 X 5,0	3/16 X 1"	TOI-120-3 - HILUX 2.8 4 X 2 - TRAS - 5 LAM	15

MERCEDES BENZ

CÓDIGO	PREÇO	MEDIDA	BITOLA	APLICAÇÃO	CX
12227	4,68	6,0 X 7,0	3/16 X 1"	MB-460-4 - L-608 - AUX - 6 LAM	15
12228	4,39	7,0 X 5,5	3/16 X 1"	MB-350-3 - L-709 À 914 - AUX - 5 LAM	15
12229	4,41	4,0 X 5,0	3/16 X 7/8	MB-820-4 - CABINE 1113	15
12230	3,90	4,0 X 4,0	3/16 X 7/8	MB-520-4 - 1924 À 1941 - CABINE - 5 LAM	15
12231	7,02	8,0 X 5,5	1/4 X 1.1/4	MB-290-3 - 1214 À 1618 - AUX - 9 LAM	15
12232	9,95	8,0 X 7,5	1/4 X 1.1/4	MB-400-4 - 1620 - AUX - 7 LAM	15

ABRAÇADEIRA PARA FEIXES

ABRAÇADEIRA COM 1 FURO VIRADA

VOLKSWAGEN

CÓDIGO	PREÇO	MEDIDA	BITOLA	APLICAÇÃO	CX
12241	6,44	7,7 X 7,5	3/16 X 1"	VW-240-3 - 8.140 , CARGO 814 SUBST - DT - 3L	15
12242	9,36	8,0 X 7,0	1/4 X 1.1/4	VW-230-3 - 8.140 - AUX - 5 LAM	15
12243	5,56	7,7 X 6,5	3/16 X 1"	VW-90-3 - 11.130 À 14.210 - AUX - 4 LAM	15
12244	6,14	7,7 X 7,5	3/16 X 1"	VW-90-3 - 11.130 À 14.210 - AUX - 5 LAM	15
12245	5,56	7,7 X 6,5	3/16 X 1"	VW-180-4 - 16.220 - AUX - 6 LAM	15

VOLVO

CÓDIGO	PREÇO	MEDIDA	BITOLA	APLICAÇÃO	CX
12250	8,19	10,0 X 6,0	1/4 X 1.1/4	VL-20-17 - N-1020, N-1220 E N-10 - TR - 17L	15
12251	10,24	10,0 X 7,5	1/4 X 1.1/4	VL-50-7 - N-10 E N-12 - TRAS - 7 LAM	15

ABRAÇADEIRA COM 2 FUIROS VIRADA

MERCEDES BENZ

CÓDIGO	PREÇO	MEDIDA	BITOLA	APLICAÇÃO	CX
12255	4,68	8,0 X 5,5	3/16 X 1"	MB-70-3 - 321, 1113 À 1215 - AUX - 6 LAM	15

ABRAÇADEIRA S/ FURO NA BASE C/ FURO LATERAL

MERCEDES BENZ

CÓDIGO	PREÇO	MEDIDA	BITOLA	APLICAÇÃO	CX
12323	15,60	8,0 X 14,0	1/4 X 1.1/4	ESPECIAL	15
12324	19,60	8,0 X 15,5	1/4 X 1.1/4	ESPECIAL	15
12325	10,53	9,0 X 7,5	1/4 X 1.1/4	MB-530-3 - 1924 E 1929 - DIANT - 8 LAM	15
12326	12,29	9,0 X 10,0	1/4 X 1.1/4	MB-530-3 - 1924 E 1929 - DIANT - 9 LAM	15
12327	11,12	10,0 X 8,5	1/4 X 1.1/4	MB-540-4 - 1924 E 1929 - TRAS - 8 LAM	15
12328	12,87	10,0 X 10,0	1/4 X 1.1/4	MB-540-4 - 1924 E 1929 - TRAS - 9 LAM	15
12329	10,53	9,0 X 7,5	1/4 X 1.1/4	MB-160-3 - 1932, 1933, 1934 E 2635 - DT - 8L	15
12330	12,29	9,0 X 10,0	1/4 X 1.1/4	MB-160-3 - 1932, 1933, 1934 E 2635 - DT - 9L	15
12331	10,82	10,0 X 8,0	1/4 X 1.1/4	MB-170-3 - 1932, 1933 E 1934 - TRAS - 6L	15
12332	12,29	10,0 X 9,5	1/4 X 1.1/4	MB-170-3 - 1932, 1933 E 1934 - TRAS - 7L	15

ABRAÇADEIRA PARA FEIXES

TUBO ESPAÇADOR PARA ABRAÇADEIRAS - GALVANIZADO

MEDIDAS	
Espessura: 5/8 Comprimento: 46MM	
	CÓDIGO: 15451
	EMBALAGEM: 20 UNID.
	R\$ 1,36 UNID.

MEDIDAS	
Espessura: 5/8 Comprimento: 52MM	
	CÓDIGO: 15452
	EMBALAGEM: 20 UNID.
	R\$ 1,36 UNID.

MEDIDAS	
Espessura: 5/8 Comprimento: 59MM	
	CÓDIGO: 15453
	EMBALAGEM: 20 UNID.
	R\$ 1,49 UNID.

MEDIDAS	
Espessura: 5/8 Comprimento: 62MM	
	CÓDIGO: 15454
	EMBALAGEM: 20 UNID.
	R\$ 1,49 UNID.

MEDIDAS	
Espessura: 5/8 Comprimento: 65MM	
	CÓDIGO: 15455
	EMBALAGEM: 20 UNID.
	R\$ 1,49 UNID.

MEDIDAS	
Espessura: 5/8 Comprimento: 72MM	
	CÓDIGO: 15456
	EMBALAGEM: 20 UNID.
	R\$ 1,63 UNID.

MEDIDAS	
Espessura: 5/8 Comprimento: 77MM	
	CÓDIGO: 15457
	EMBALAGEM: 20 UNID.
	R\$ 1,63 UNID.

MEDIDAS	
Espessura: 5/8 Comprimento: 82MM	
	CÓDIGO: 15458
	EMBALAGEM: 20 UNID.
	R\$ 1,76 UNID.

ABRAÇADEIRA PARA FEIXES

TUBO ESPAÇADOR PARA ABRAÇADEIRAS - GALVANIZADO

MEDIDAS

Espessura: 5/8
Comprimento: 92 MM



CÓDIGO:

15459

EMBALAGEM:

20 UNID.

R\$ 1,90 UNID.

MEDIDAS

Espessura: 5/8
Comprimento: 102MM



CÓDIGO:

15460

EMBALAGEM:

20 UNID.

R\$ 2,03 UNID.